



Eco Luxury PHA + LHA Balancing Toner





AVEA Eco Luxury PHA + LHA Balancing Toner 150ml

Exfoliation, why do you need it?

As skin matures, its ability to regenerate surface cells slows, resulting in an accumulation of dead skin cells on the surface. As a result, the natural skin tone is dulled, and the original youthful skin tone is lost.

Correct(Ideal) Skin Turnover?

In normal healthy skin, new cells are created in the skin every 28 days, and old and aged cells naturally fall off. This is called the turnover cycle, and if the aged cells do not fall off naturally, dead skin cells accumulate in the pores and cause skin troubles. Acid ingredients that can help to remove dead skin cells that have not been exfoliated and adjust the skin rhythm are: AHA, BHA, PHA, and LHA.

	AHA	BHA	PHA	LHA
Function	Exfoliation (water soluble)	Removes dead skin cells and sebum (oil-soluble)	Exfoliation (water soluble)	Removes dead skin cells and sebum (oil-soluble)
Particle	Small	Small	Large	Largest
Skin Penetration	Fast	Fast	Slowly Absorbed	Slowly Absorbed
Photosensitivity Reaction	Increased Sunlight Sensitivity	Increased Sunlight Sensitivity	Low Concern for Photosensitivity	No Photosensitivity Concerns
Acidity	Acidic	Acidic	Weakly Acidic	Weakly Acidic
Stimulus Degree	High	High	Little	Low





AVEA Eco Luxury PHA + LHA Balancing Toner 150ml

Next Generation Peeling & Mildly Acidic Daily Toner!



#PHA, #LHA #Jeju Green Tangerine, #ProbioticsIII #4 Kinds of Super Centella #Houttuynia Cordata Extract
#Mild Dead Skin Care #Oil & Moisture Balance #Skin Barrier Care #Moisturizing Deep in the Skin #Nutrition, #Brightening #Skin Soothing #Sebum Care in Pores. & Good for even Sensitive Skin #Mildly Acidic #Vegan

AVEA Eco Luxury PHA + LHA Balancing Toner helps soothe and soothe tired skin with the phytoncica complex, a plant ingredient specialized in soothing and moisturizing, and provides instant hydration.

This is a daily balancing toner that purifies dull skin with its PHA maltobionic acid and LHA capryloyl salicylic acid next-generation peeling ingredients help to take care of dead skin cells.

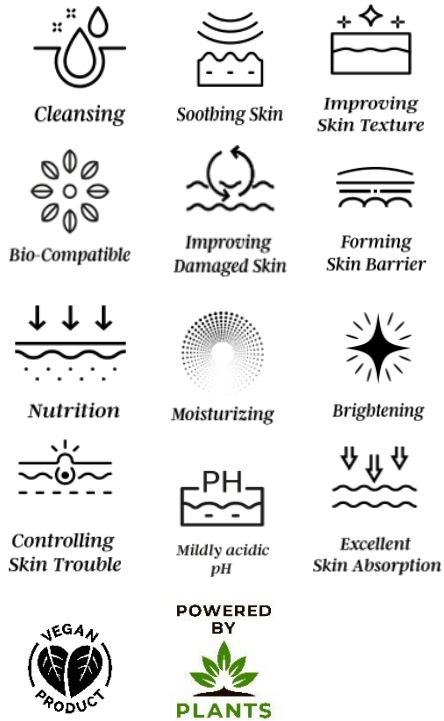
In addition, salicylic acid and citric acid contained in the white willow extract, a naturally derived plant, are additionally contained, which further helps to take care of the dead skin cells and make the skin brighter.

Eco Luxury PHA + LHA Balancing Toner contains 4 kinds of Cica ingredients extracted from Centella Asiatica, and ProbioticsIII complex lactic acid bacteria to make the skin healthy and moist.

It uses plant extracts such as eosinophilus extract and white willow extract, which are effective in soothing the skin, to relieve and soothe skin irritation and skin troubles to maintain skin health.

The Toner is a mild water formula that is absorbed without stickiness and has a light and refreshing finish, helping to absorb moisture and nutrients.

Mild dead skin care, oil and moisture balance, skin barrier care, moisture in the skin, skin nutrition, brightening, skin soothing, sebum care in pores.



Eco Luxury
PHA + LHA
Balancing Toner

Bio-Compatible
/ Excellent Skin Exfoliation
& Skin Turnover

PHA, LHA, Jeju Green Tangerine, ProbioticsIII,
4 Kinds of Super Centella Cica, Houttuynia
Cordata Extract

Mild Dead Skin Care, Oil & Moisture Balance, Skin
Barrier Care, Moisturizing Deep in the Skin,
Nutrition, Brightening, Skin Soothing, Sebum
Care in Pores. & Good for even Sensitive Skin

150ml / 5.07 fl.oz.



AVEA Eco Luxury PHA+LHA Balancing Toner

After cleansing your face, take an appropriate amount of PHA+LHA Balancing Toner on a cotton pad and smooth out the skin texture as if gently wiping the entire face.

Tip 1: Do not use after using other peeling agents or scrubs, as it may cause irritation to the skin.

Tip 2: Use around the T-zone so that the contents do not get into the eyes.

Tip 3: If your skin has recently become sensitive, try using a small amount.

Tip 4 : It is recommended to use 2~3 times a week for dry or sensitive skin type, and 3~4 times for oily or combination skin. If there is irritation to the skin, please stop using it.

Tip 5: After trimming the dead skin cells, apply a moisturizer and sunscreen.

Tip 6: Use a whitening or brightening product after keratin care to see a good effect.

Tip 7: Do not use retinol, a vitamin A component, together. It may cause skin irritation.

less is beauty : less is more

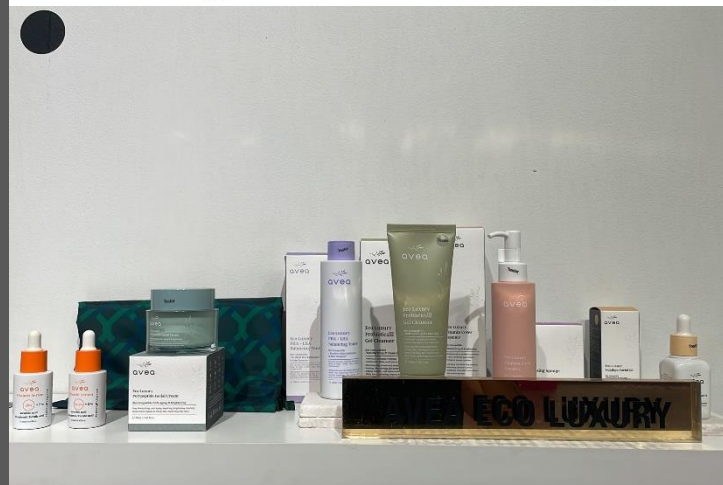
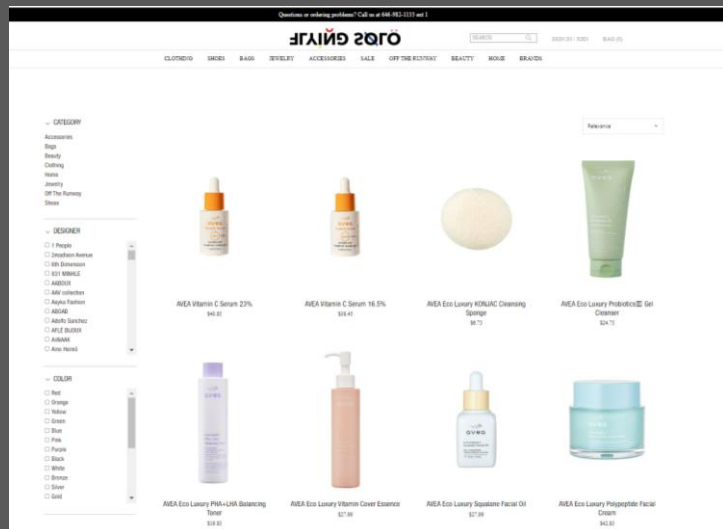




AVEA Eco Luxury is dedicated to fostering a sustainable future for our planet, its resources, and all living beings. Our products embrace eco-friendly practices, utilizing FSC Certified papers, 100% recyclable packaging, and soybean oil ink, free from air pollution. By choosing AVEA Eco Luxury, you contribute to a better environment while enjoying the benefits for your skin.

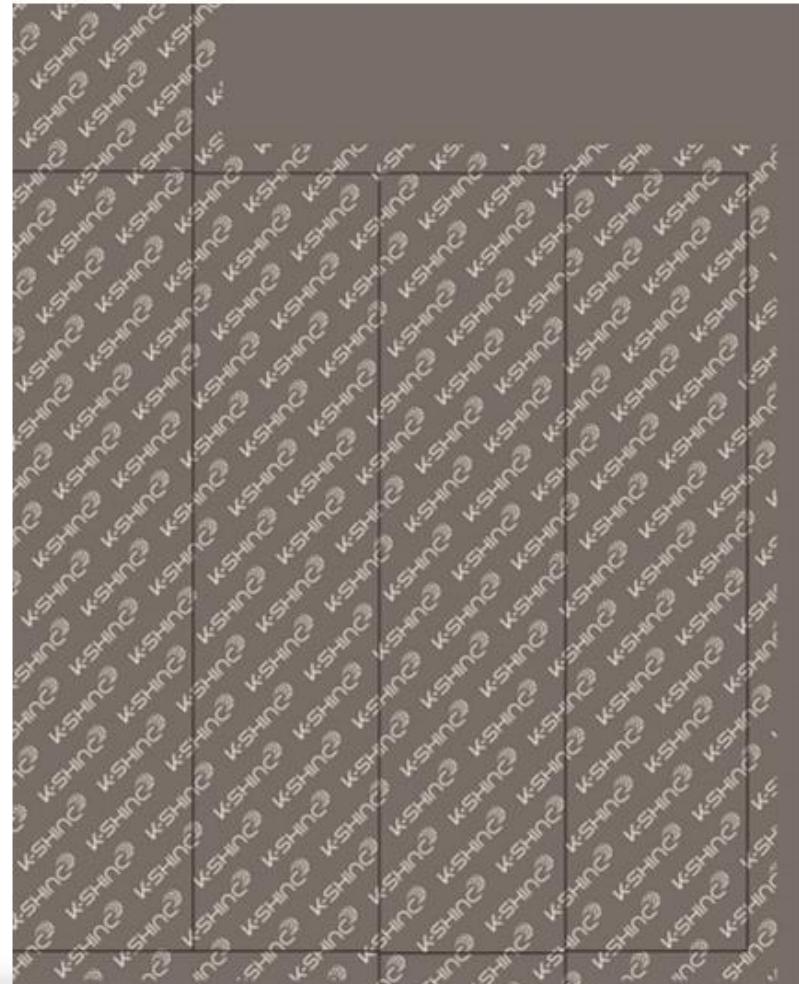
The Carton of the product (outside + inside) is all made of Eco-friendly materials.

AVEA Eco Luxury & AVEA Products in Flying Solo Exclusive New York Shops



ODM
 K-SHINE LUXURY
 SMART PEELING & MOISTURE BALANCING TONER

Based on our AVEA Eco Luxury PHA+LHA Toner
 150ml / 5.07 fl.oz





less is beauty : less is more

