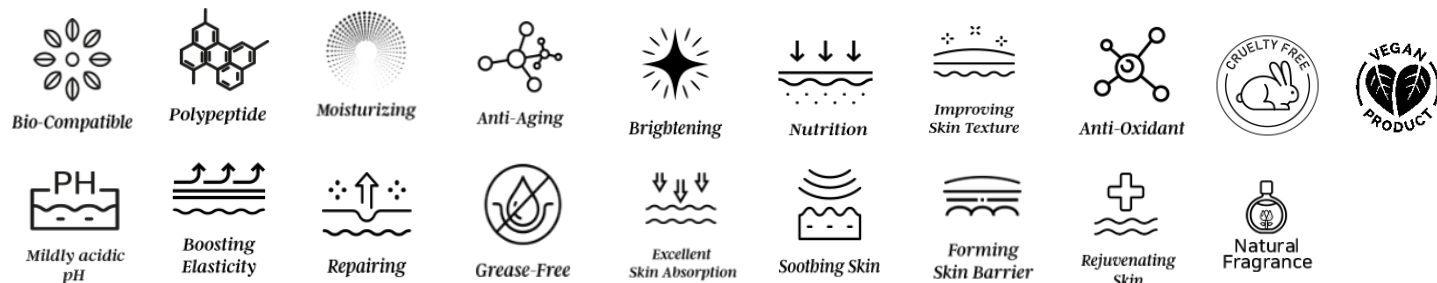




Eco Luxury Polypeptide Facial Cream



AVEA Eco Luxury Polypeptide Facial Cream :



#Intensive Anti-Aging #Improving Skin Firmness and Soften Wrinkles #Rejuvenating Skin #Enhancing Skin Texture and Tone #Improving Cell Turnover # Supporting Smoother #Highly Hydrated Skin #Allergy Free #Mildly Acidic #Double Functions #Clinically Proven #Vegan

AVEA Eco Luxury Polypeptide Facial innovative protein moisturizing cream contains high concentrations of 4 polypeptides complex, 11 peptides complex, 10 amino acids, squalane, phospholipids, phytosphingosine, ceramide NP, and phytosterols to improve skin aging, texture and make skin firm.

"Peptides in the cream is designed to boost and replenish amino acids, which are the building blocks for collagen production. And compared to topical collagen, peptides also have a much smaller particle size and can actually be absorbed into your skin.

This Polypeptide cream contains 11 signal peptides complex and 4 polypeptides complex ingredients which are plant-derived growth factors to trigger and stimulate elastin and forming collagen, leading to younger and bouncy skin.

Add it to your skincare routine just like adding protein to your smoothie. This cream has a slightly acidic pH that is ideal for the skin.





AVEA Eco Luxury Polypeptide Facial Cream : Conti

Innovative Ingredient - 4 Polypeptide Complex :

rh-Polypeptide-1 (bFGF) : Collagen regeneration and skin cell regeneration effect

rh-Polypeptide-9 (VEGF) : Support skin cell and tissue growth and improve skin tone vitality effect

rh-Polypeptide-3(KGF) : Promote collagen synthesis for anti-aging and fast skin turnover effect

rh-Polypeptide-22(TGF- β) : Stimulates epidermal cell growth during wound healing, stimulates collagen synthesis, and restores wrinkles

AVEA Eco Luxury Polypeptide Facial Cream has not only formulated multi Peptides but also formulated Adenosine, Niacinamide, Hyaluronic acid, Squalane, Vitamin E & etc which are the best way to receive the clinically proven ultimate results

AVEA Eco Luxury Polypeptide Cream used Allergen-Free natural fragrance from Custom Essence.

11 Active Peptides : Octapeptide-7, Copper Tripeptide-1, sh-Pentapeptide-19, sh-Oligopeptide-9, sh-Octapeptide-4, sh-Decapeptide-7, Galloyl Pentapeptide-33 rh-Oligopeptide-2, Acetyl Hexapeptide-8, Palmitoyl Pentapeptide-4, rh-Oligopeptide-1

10 Amino Acids : Methionine, Lysine, Aspartic acid, Proline, Glutamic acid, Valine, Glycine, Cysteine, Asparagine, & Arginine

AVEA Eco Luxury Polypeptide Cream is not only makes the skin soft, but also makes it more moist and supple. Rich in many kinds of approved amino acids and nutrients, it makes the skin strong and healthy. It has a slightly acidic pH ideal for the skin and is a functional cosmetic for wrinkle improvement and brightening.

This Cream absorbs instantly leaving your skin feeling soft and smooth, never greasy!



TEST REPORT CERTIFICATION

Study code: HE-P22-0014 Receipt Date: 2022. 08. 24
 Client: Miz Herb Test completion date: 2022. 09. 08 ~ 2022. 09. 22
 Representative: Eunjoo Song
 Address: 3rd, 4th floor, 132-7, Nae-dong, Ojeong-gu, Bucheon-si, Gyeonggi-do, Korea
 Product: Avea Eco Luxury Polypeptide Facial Cream

Test result					
Assessment			Period		Status
			Before	After 2 weeks	
Wrinkle depth improvement	Forehead	Result	0.0665±0.0087	0.0586±0.0083	Pass
		Significance probability	-	<0.001	
		Improvement rate	-	11.90%	
	Glabella	Result	0.0895±0.0194	0.0796±0.0159	
		Significance probability	-	<0.001	
		Improvement rate	-	11.07%	
	Eye wrinkle (tiptoe)	Result	0.1119±0.0233	0.0934±0.0181	
		Significance probability	-	<0.001	
		Improvement rate	-	16.51%	
	Smile line	Result	0.0778±0.0161	0.0690±0.0138	
		Significance probability	-	<0.001	
		Improvement rate	-	11.38%	
	Around mouth	Result	0.1015±0.0374	0.0902±0.0387	
		Significance probability	-	<0.001	
		Improvement rate	-	11.22%	
	Neck	Result	0.0881±0.0279	0.0796±0.0255	
		Significance probability	-	<0.001	
		Improvement rate	-	9.63%	



Clinical Test Report for Improving Wrinkles

:
 Clinically Proven
 AVEA
 Eco Luxury
 Polypeptide Facial Cream

Fine wrinkles (fine lines) improvement	Result	0.0510±0.0150	0.0437±0.0134	Pass
	Significance probability	-	<0.001	
	Improvement rate	-	14.33%	

- Reference report: HE-R22-0014_Signed report
- Remarks: In this study, 22 subjects were recruited, 2 (No. 06, 19) dropped out due to protocol violation (no visit after 2 weeks) and the final 20 subjects were included in the analysis of the results. The average age of the subjects was 50.7 years old, the maximum age was 67 years old, and the minimum age was 39 years old.

Study Director: Wonkyu Hong (Deputy Registrar)

07th October 2022

Human Ethic Co., Ltd. Skin Clinical Trial Center President

1523~1526, 16, Gasan digital 1-ro, Geumcheon-gu, Seoul, Republic of Korea

www.humantest.co.kr T : 02-6959-9270, F : 070-7500-0328





AVEA Eco Luxury Polypeptide Facial Cream

Apply the Polypeptide Cream gently on your face and neck area at the cream stage.

If you use it regularly twice a day, you can feel the effect of this cream on your skin. Clinically Proven.

TIP : If you need extra rich moisture, mix one or two drops of AVEA Eco Luxury Squalane Facial Oil for an ultimate result.

less is beauty : less is more

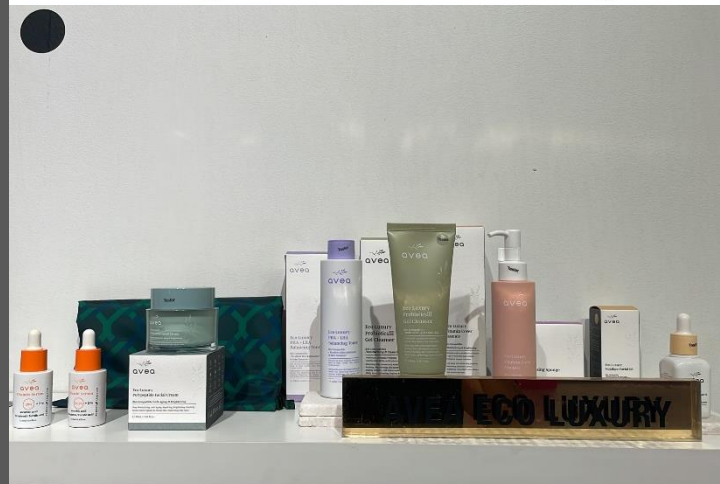
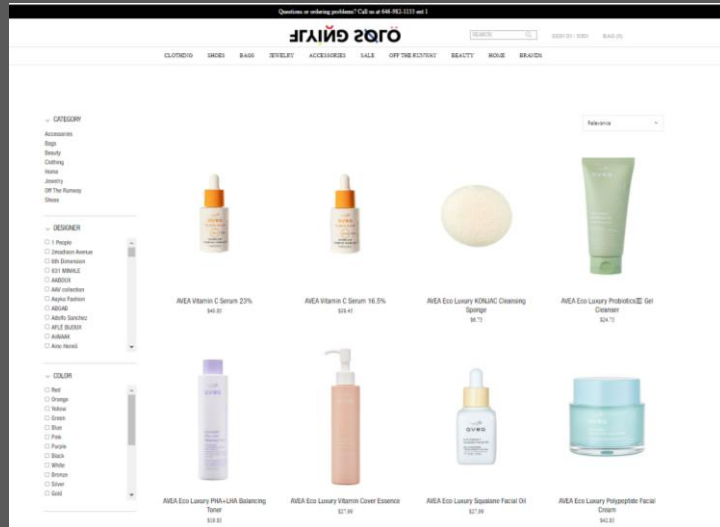




AVEA Eco Luxury is dedicated to fostering a sustainable future for our planet, its resources, and all living beings. Our products embrace eco-friendly practices, utilizing FSC Certified papers, 100% recyclable packaging, and soybean oil ink, free from air pollution. By choosing AVEA Eco Luxury, you contribute to a better environment while enjoying the benefits for your skin.

The Carton of the product (outside + inside) is all made of Eco-friendly materials.

AVEA Eco Luxury & AVEA Products in
Flying Solo
Exclusive New York Shops





ODM

K-SHINE LUXURY

POLYPEPTIDE ANTI-AGING GLOSSY CREAM

Based on our AVEA Eco Luxury Polypeptide Cream

50ml / 1.69 fl.oz.



less is beauty : less is more

