



2023

Solar System LED Lighting

Make your Light be True !

CYAN HOLDINGS,

Change the energy world !

CYAN HOLDINGS
Company Profile
2023

1. Vision	3
2. Company Over View	4
Organization	10
System Portfolio	11
Business Model	12
LED Lighting	13
LED Outdoor Light 1	14
LED Outdoor Light 2	15
LED Outdoor Light 3	16
LED Indoor Light 1 -5	17 -21
Light Installation	22
3. Solar Street Light for ECO Plane	31
Features	
PV Module	34
LED Street Light	35
Light Intensity Distribution Curve	36
Controller	37
Battery	38

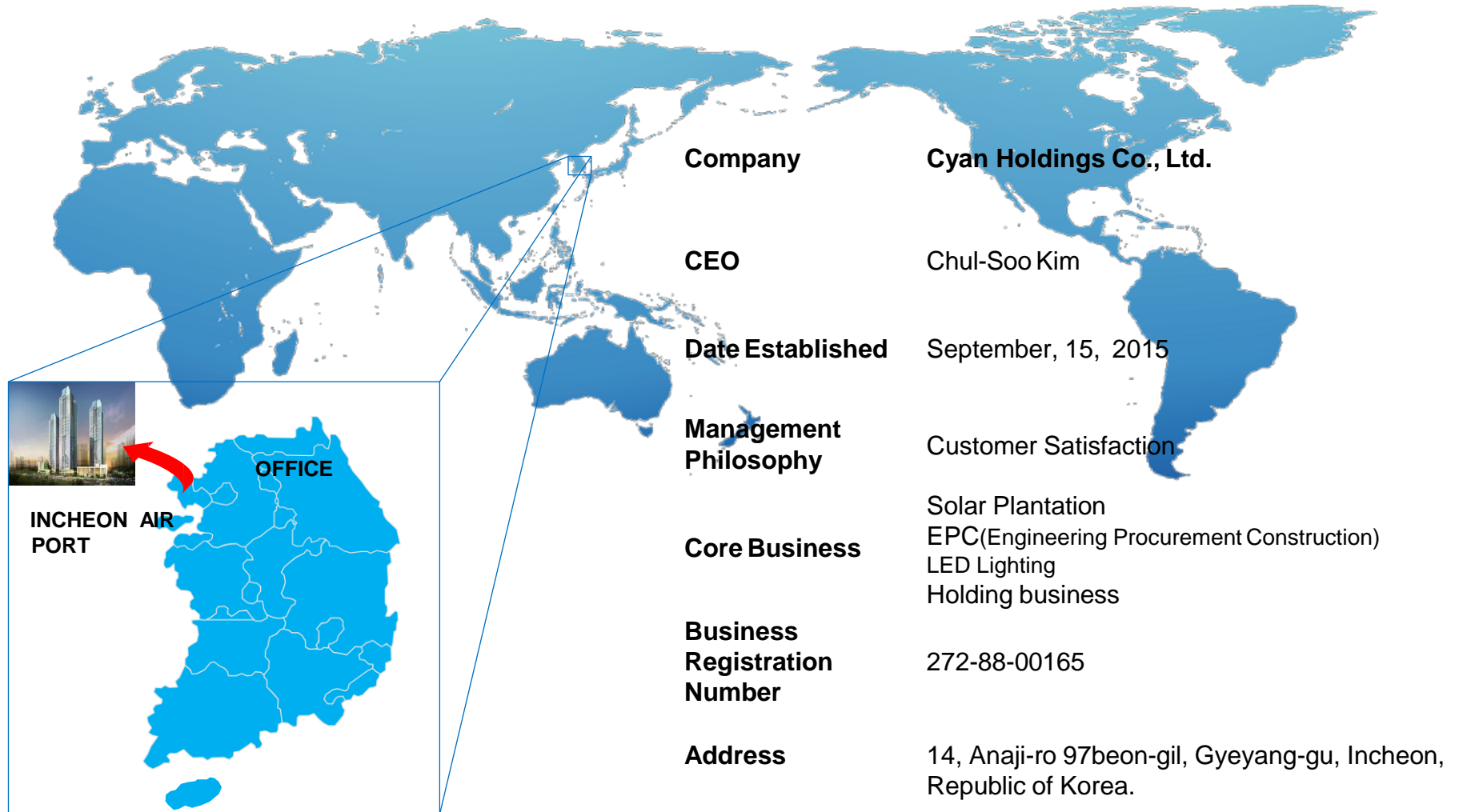
We, CYAN HOLDINGS Co., Ltd., are a leading company in Korea manufacturing LED lighting & Solar system for indoor and outdoor application products. , CYAN HOLDINGS Co., Ltd. was founded by Chul Soo - Kim in 2015, based in the Korea.

The development of renewable energy sources to replace sources of energy is one of the most important challenges of upcoming decades.

Our mission is to be the premier developer of alternative and renewable energy source that will include Light, Wind and Solar Energy. Our goal is to be the leader in product line of energy saving devices and systems that will fit our clients by offering them an alternative choice over standard lighting and high energy consuming products. Our primary focus is on LED lighting, Windmill and Solar Power system products and intelligent energy saving devices.

CYAN HOLDINGS Co., Ltd., fulfills this mission by delivering the best green energy systems in the business. Not satisfied with those achievements, all our executives and staff are doing our best to provide the best quality products and services to our customers under a rapidly changing technology environment. We are grateful for your interest in our company and you can get further information about us on our web site, <http://www.cyanholdings.co.kr>





Company	Cyan Holdings Co., Ltd.
CEO	Chul-Soo Kim
Date Established	September, 15, 2015
Management Philosophy	Customer Satisfaction
Core Business	Solar Plantation EPC(Engineering Procurement Construction) LED Lighting Holding business
Business Registration Number	272-88-00165
Address	14, Anaji-ro 97beon-gil, Gyeyang-gu, Incheon, Republic of Korea.

2003

10 Established Private Company → **Ornics**

2004

01 developed POGO Type Mainboard for **Samsung Electro-Mechanics**
 developed V420 camera module driver board for **Samsung Electro-Mechanics**
 developed PH-2500, WPH-S2500 camera module driver board for **Curitel**
 developed I8900, L8900 Round-Header Board for **LG Electronics**
 developed EG911 camera module driver board for **E to M**
 developed TWC-2050 camera module driver board for **Telson**

02 developed E700 camera module driver board for **Samsung Electro-Mechanics**
 developed SKTTu4 camera module driver board for **SK Telecom**

03 developed D430, 1505, M500, SLPS camera module driver Board for **Samsung Electro-Mechanics**
 developed LED driver board for **Cammsys**
 developed H885 driver board for **Cammsys**

04 developed SCH-A670 camera module driver board for **Samsung Electro-Mechanics**

05 developed ER Header Board for **Cammsys**

06 developed EG911, TD5C, TDI55 camera module driver board for **Cammsys**

07 developed ER24P, ER36P header Board for **Cammsys**
 developed E-800 camera module driver board, mega type for **Samsung Electro-Mechanics**

08 developed M13-SKTT camera module driver board for **SK Telecom**

11 developed Micron-3,2M M MT9T001 camera module driver board for **3M**
 developed SY103, SY104 camera module driver board for **Cammsys**



2005

- 01 developed Micron 2M OL-1126 carmer module driver board for **Cammsys**
- developed MTV9V112 camera module driver board for **Mtelevision**
- 02 developed SCH-E330 camera module driver board for **Samsung Electro-Mechanics**
- 04 developed SGH-E300 camera module driver board for **Samsung Electro-Mechanics**
- 08 developed **Street block for blind(Patent)**

2007

- 01 developed SMPS 200W in casino LCD monitor for **ROGITEL**
- 02 developed radar VME BUS for **FOCUSSYSTEM**
- 03 developed a nuclear power plant Solenoid controller(400W) for **Smart Valve Company**
- developed street light electric shock protector for **Shinwoo Electric Industrial Controls co., Ltd.**
- 06 developed LED display demo kit for **ExpoView, Inc**
- developed LED Street light SMPS 13.5V for **PATRA co., Ltd.**
- developed ORNICS LED Street light
- 07 developed LED Street Light SMPS for **Shinsung-Lux Technology Co., Ltd.**
- developed Smart Fan sesor & Controller for **SD System Co., Ltd.**
- developed Tunnel Emergency LED Panel Light for **Chongbo Electric Co., Ltd.**
- developed Acriche Demo Kit for **Seoul Semiconductor**
- developed infrared Sensor LED Driver for **Seoul Optodevice**
- 08 developed ATX, computer sub board, for **ROGITEL**
- developed Z-power LED Driver Module for **Seoul Semiconductor**
- developed LED Emergy Taxi Light for **Hyorim Industrial Inc.**
- 11 developed Natural White Demo Kit for **Seoul Semiconductor**
- developed HBMGFRT722 Demo Kit for **Seoul Semiconductor**
- 12 developed Casino Bill Acceptor Sub Board for **ROGITEL**
- developed 120W LED Flood Light for **Bandilux**
- developed Detector of Tracks Disconnection for **BooYoung Industrial Electronic Co., Ltd.**



2008

- 01 developed AW2211 Demo Kit for **Seoul Semiconductor**
- 03 developed LED Lens Demo Kit for **Seconix Co., Ltd.**
- developed SFT825N PCB for **Seoul Semiconductor**
- 04 developed Top LED2, CWT722, CAW 722-S, for **Seoul Semiconductor**
- 05 developed P7 Driver Board for **Seoul Semiconductor**
- developed LT520 Driver Board for **Seoul Optodevice**
- 06 developed SFT722N-S, SFT825N-SB, SFT825Z-SB Driver for **Seoul Semiconductor**
- 07 developed 30W LED Flood Light for **Lumicom, Inc.**
- developed 70W LED pedestrian Light for **Banilux**
- developed SFT825N-SA, SFT825N-SC Driver Board for **Seoul Semiconductor**
- developed Z-Power W7240CO Driver Board for **Seoul Semiconductor Japan**
- 08 developed SFT8211N-BS-A and B Driver Board for **Seoul Semiconductor**
- 10 developed LED Solar Emergency Taxi Light for **Pyrotec Technology**



2009

- 01 developed 8W LED Lamp for **Bandilux**
- 02 developed SMPS SE-600-24V for **Bandilux**
- 03 developed Full Color LED Bar 50 for **Bandilux**
- 04 developed 22W LED fluorescent light 1200mm for **Bandilux**
- 05 developed CIMG Type LED Down Light for **ERGO German**
- 06 developed 1M 14W LED Purchase Type Light for **Bandilux**
- developed 60W LED Flood Light for **IUS Co., Ltd.**
- 07 developed 25W LED Fluorescent Light Module for **Bandilux**
- 09 developed Roo Screen LED Bar for **SP Data**



2010

- 03 developed LED Solar Light and Solar Home Light for **India**
- 04 developed 60W Solar Type LED Street Light for **Hi-Energy Korea Co., Ltd**
- 05 developed 4.5W LED Downlight for **NoxTech Co., Ltd.**
- 06 developed LED Factory Light for **India**
- 10 developed LED Plant Cultivation Equipment for **Hyunjin Lighting Co., Ltd**
- 11 developed LED GU10 and MR16 for **ERGO LED German**
- 12 developed 60W LED Movie Light for **GTEKMedia USA**



2011

- 03 developed LED Solar Light and Solar Home Light for **India**
- 04 developed 60W Solar Type LED Street Light for **Hi-Energy Korea Co., Ltd**
- 04 JVA Russia Amuro region **Agreement**
- 05 developed 4.5W LED Downlight for **NoxTech Co., Ltd.**
- 06 developed LED Factory Light for **India**
- 10 developed LED Plant Cultivation Equipment for **Hyunjin Lighting Co., Ltd**
- 11 developed LED GU10 and MR16 for **ERGO LED German**
- 12 developed 60W LED Movie Light for **GTEKMedia USA**



2014

- 01 LED Flat Light 50W for **Suan Havy Ind. Co., Ltd**
- 02 LED Hi-bay Light 120W for **Mando Co., Ltd**
- 03 LED Street Light and Tube Light for **Saeron Automotive Co., Ltd.**
- 04 LED Factory Light for **Metaldyne Co., Ltd.**
- 04 LED Hi-bay Light 120W for **SBC-enertech Co., Ltd**
- 05 LED Tube Light 20W **Wooju Elec. Co., Ltd.**
- 09 LED Downlight, Par30, LED HQI 45W **Bupyong station**



2015

- 06 TISI Approved for LED Street Light **Thailand**
- 09 **Establishment of CYAN HOLDINGS Co., Ltd**
- 11 CYAN HOLDINGS Co., Ltd. with PTS3 JVA **Philippine**
- 12 **Philippine Air port Bidding for CCTV (BOC)**



2016

- 05 developed 25W LED Module
- 06 developed LED street Light 25W to 200W
- 07 developed LED Solar street 25W to 75W



2016

11 Installed Vietnam 80W LED Street Light for solar Vietnam
 11 developed LED Hi-bay aging tester Parlux



2017

06 Installed Vietnam 3KW solar system Vietnam

2018

06 Installed Vietnam 3KW solar system Vietnam
 08 developed Smart led safety floor controller sung won
 12 Landscape lighting references Bupyeong city



2019

12 developed ice cream dispenser Gela World



2020

- 02 developed hi efficiency le street light 150w
- 03 developed Pedestrian crossing work **A1 Traffic light R&D**
- 07 developed Pedestrian crossing work demo kits **A1 Traffic light R&D**



2021

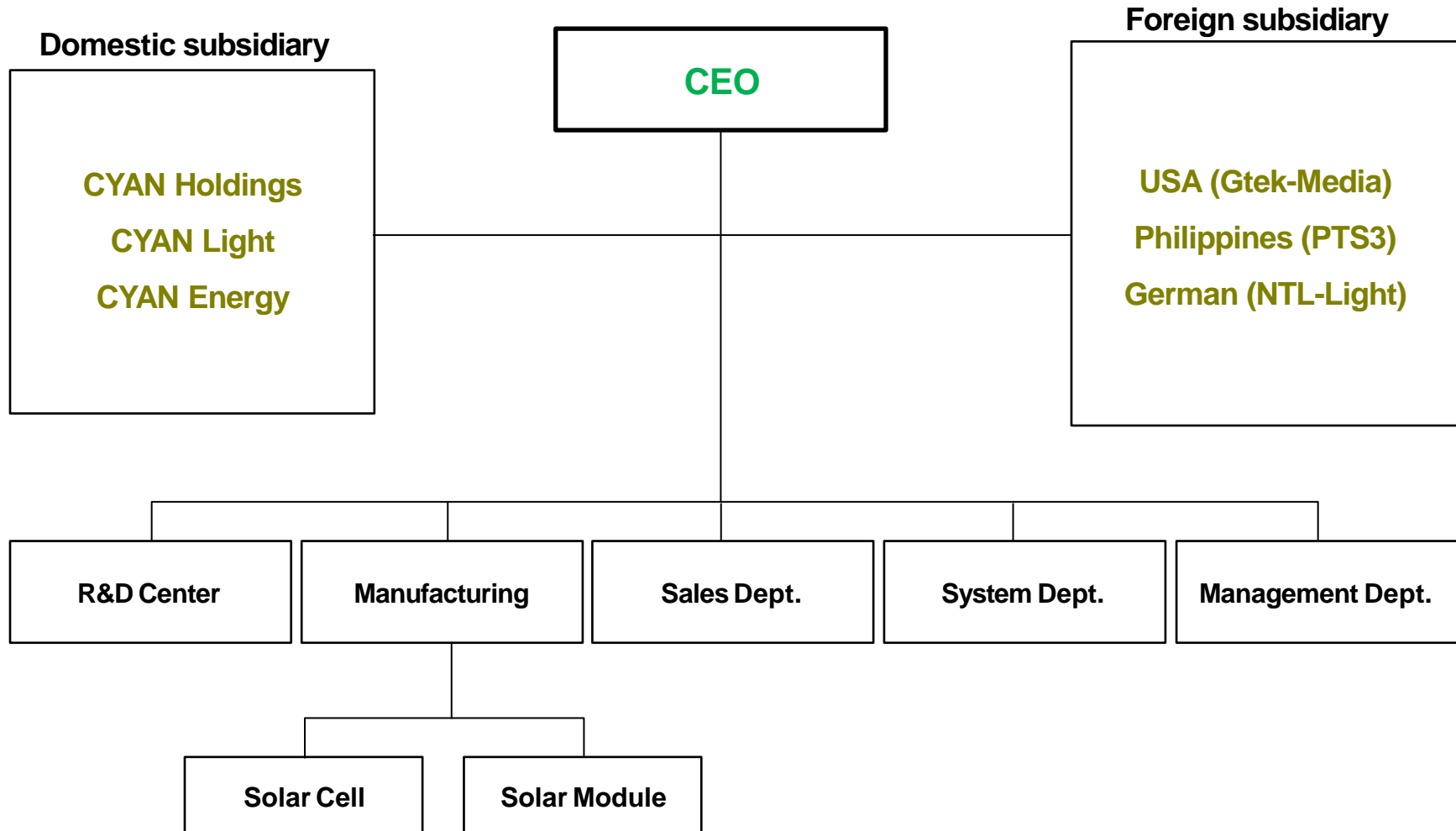
- 06 developed plasma and ionizer 4,5KV 5,5KV **AHA**
- 11 developed plasma 7,5KV **AHA**



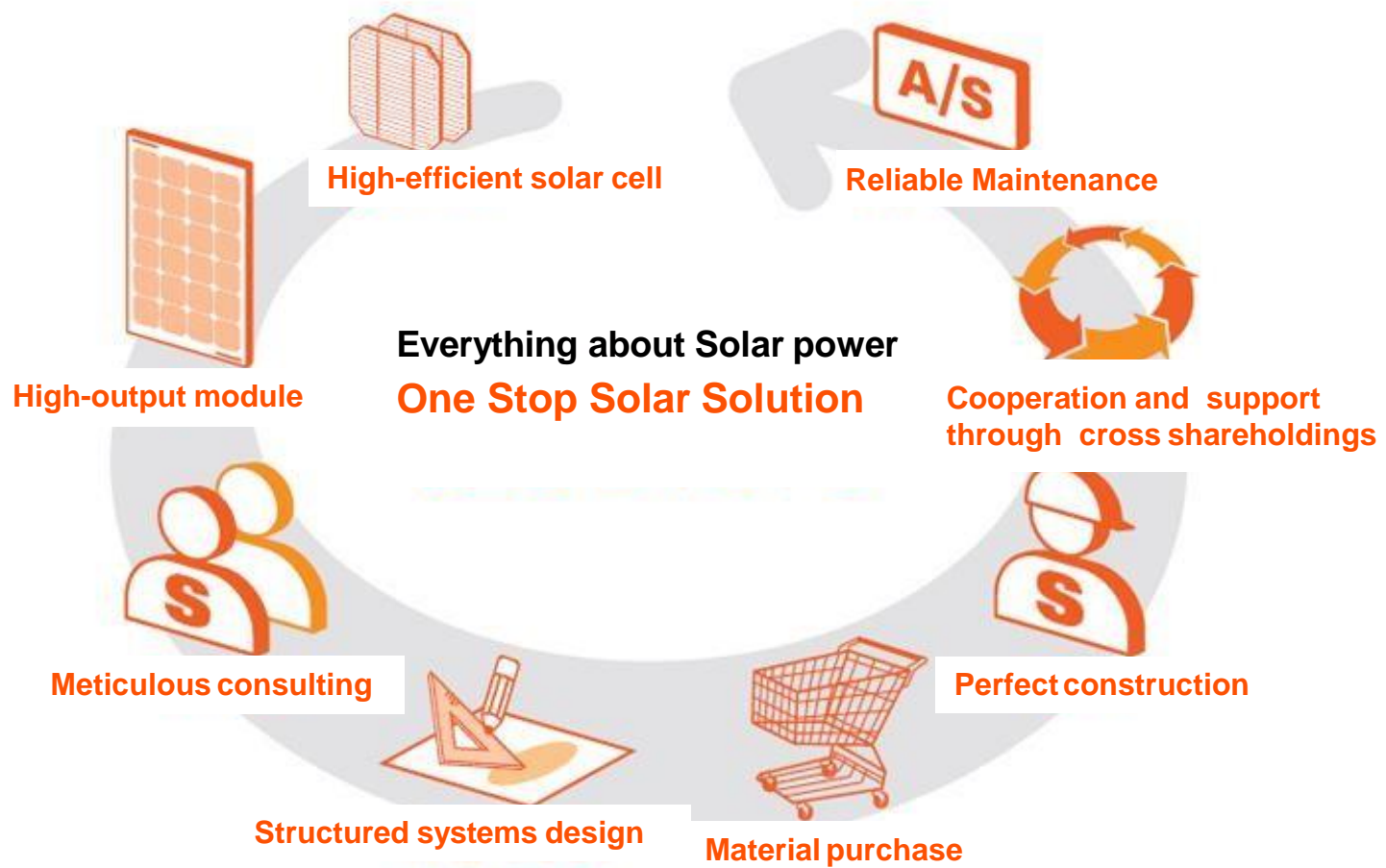
2022

- 08 Patent ROAD-CONDITION WARNING DEVICE
- 09 Patent ROAD INFORMATION DISPLAY DEVICE
- 11 Patent NOTIFICATION SYSTEM FOR TURNING VEHICLE
- 12 Indonesia Siak city for solar power plan for 100MW





System Portfolio







Integrated Solar Street Light 80W

Life(hrs) : 50,000 ~ 60,000(5 years if using 12hours per day)

Energy Save : 70 ~90%

Application : Park, Room, Ceiling, Spot lighting

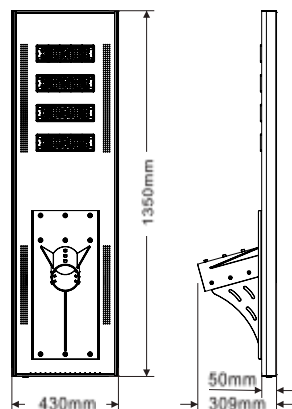
Color Rendering : >Ra80

Model : CY-ISSL-80W

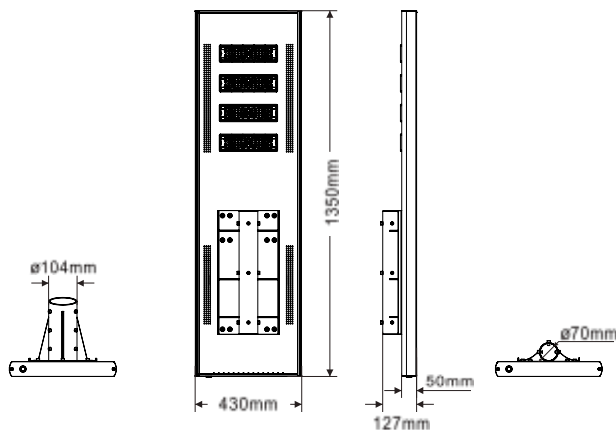
Power Consumption	80W
CRI	> 80
Efficiency (lm/w)	150-160
Luminous Flux (lm)	12,400
Dimension W x H x D (mm)	1350 x 430
Battery	Li-ion 3.7V 100Ah



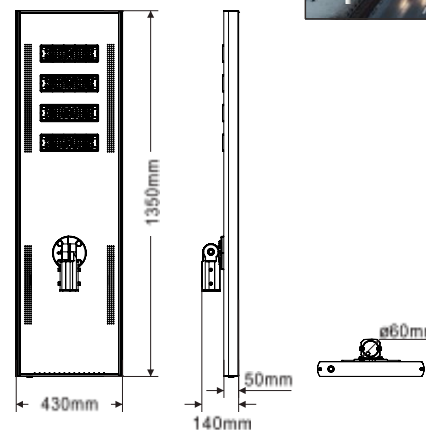
Vertical Adapter



Horizontal Adapter



Adjustable Adapter



Integrated Solar Street Light 80W

Life(hrs) : 50,000 ~ 60,000(5 years if using 12hours per day)

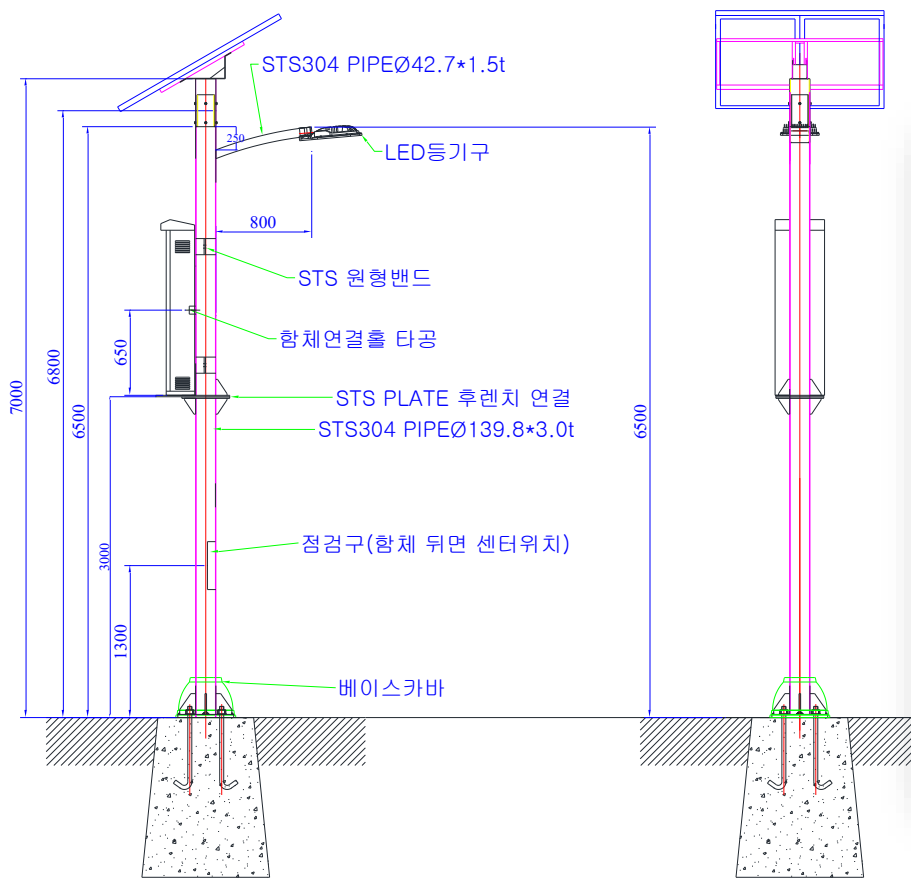
Energy Save : 70 ~90%

Application : Park, Room, Ceiling, Spot lighting

Color Rendering : >Ra80

Model : CY-ISSL-80W

Power Consumption	80W
CRI	> 80
Efficiency (lm/w)	150-160
Luminous Flux (lm)	12,400
Dimension W x H x D (mm)	1350 x 430
Battery	Li-ion 7.4V 100Ah



Adjustable dapter



Traffic signal controller



Standard "A" Type



Standard "A" Type
(LSU 8slot)



Slim "B" Type

- Product features

- Compatible with other Korean companies
- On / Off line control
- Loop detector / Option board (Special function)
- Children's safety zone
- User define color

LED TRAFFIC LIGHT

LED Traffic light 300mm (12")



- Embossed lens
- Weather Proof



- Clear lens
- Weather Proof

TECHNICAL SPECIFICATIONS								
	VEHICLE SIGNAL LAMP			ARROW SIGNAL LAMP			PEDESTRIAN LAMP	
	RED	YELLOW	GREEN	RED	YELLOW	GREEN	RED	GREEN
Luminance Intensity	≥ 400cd	≥ 400cd	≥ 400cd	≥ 200cd	≥ 200cd	≥ 200cd	≥ 100cd	≥ 100cd
Power Consumption	10W ≥	10W ≥	10W ≥	6W ≥	6W ≥	6W ≥	6W ≥	6W ≥
No.of Diodes(pcs)	≥ 144	≥ 144	≥ 132	≥ 48	≥ 48	≥ 48	≥ 80	≥ 80
Power Factor	> 0.9			> 0.9			> 0.9	
THD	< 20%			< 20%			< 20%	
Transformer	built-in			built-in			built-in	
Input Voltage	85V AC ~ 285V AC (Free volt)			85V AC ~ 285V AC (Free volt)			85V AC ~ 285V AC (Free volt)	
Output Voltage	13V±1V			13V±1V			13V±1V	
Operating Frequency	60Hz			60Hz			60Hz	
Operating Temperature	-30°C ~ 70°C			-30°C ~ 70°C			-30°C ~ 70°C	
Lens Material	Polycarbonate			Polycarbonate			Polycarbonate	
Lens Type	Clear / Embossed / Weather Proof			Clear / Embossed / Weather Proof			Clear / Embossed / Weather Proof	
Ingress Protection Rating	IP 66			IP 66			IP 66	
Warranty Period	5 Years			5 Years			5 Years	
Environmental Aspect	Environmental Friendly			Environmental Friendly			Environmental Friendly	

Integrated Pedestrian Lamp



- Clear lens
- Weather Proof

TECHNICAL SPECIFICATIONS				
	PEDESTRIAN LAMP 300mm(12")		PEDESTRIAN LAMP 200mm(8")	
	RED & GREEN	GREEN & RED	RED & GREEN	GREEN & RED
Luminance Intensity	≥ 200cd	≥ 200cd	≥ 100cd	≥ 100cd
Power Consumption	15W ≥	15W ≥	15W ≥	15W ≥
No.of Diodes(pcs)	≥ 240	≥ 240	≥ 180	≥ 180
Power Factor	> 0.9		> 0.9	
THD	< 20%		< 20%	
Transformer	built-in		built-in	
Input Voltage	85V AC ~ 285V AC (Free volt)		85V AC ~ 285V AC (Free volt)	
Output Voltage	13V±1V		13V±1V	
Operating Frequency	60Hz		60Hz	
Operating Temperature	-30°C ~ 70°C		-30°C ~ 70°C	
Lens Material	Polycarbonate		Polycarbonate	
Lens Type	Clear / Embossed / Weather Proof		Clear / Embossed / Weather Proof	
Ingress Protection Rating	IP 66		IP 66	
Warranty Period	5 Years		5 Years	
Environmental Aspect	Environmental Friendly		Environmental Friendly	

LED TRAFFIC LIGHT

Assembly



Red



Yellow



Arrow



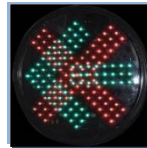
Green



Pedestrian



Cross



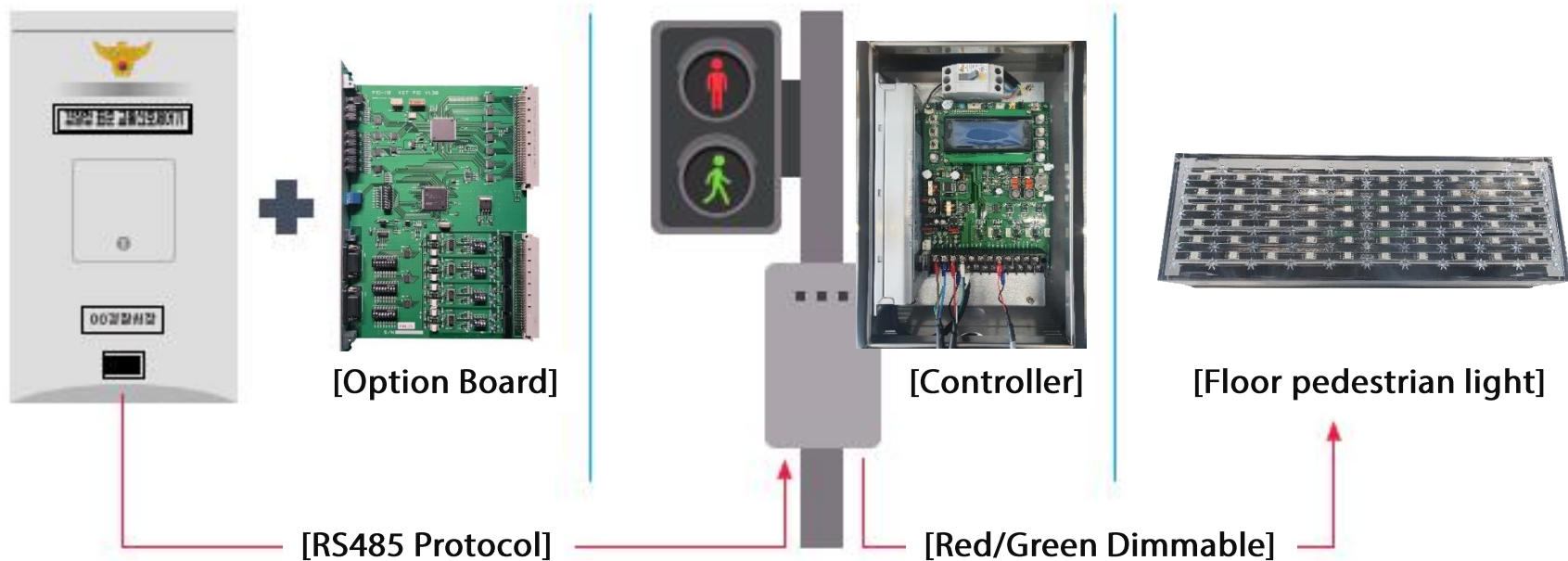
Red & Green Timer



Bicycle

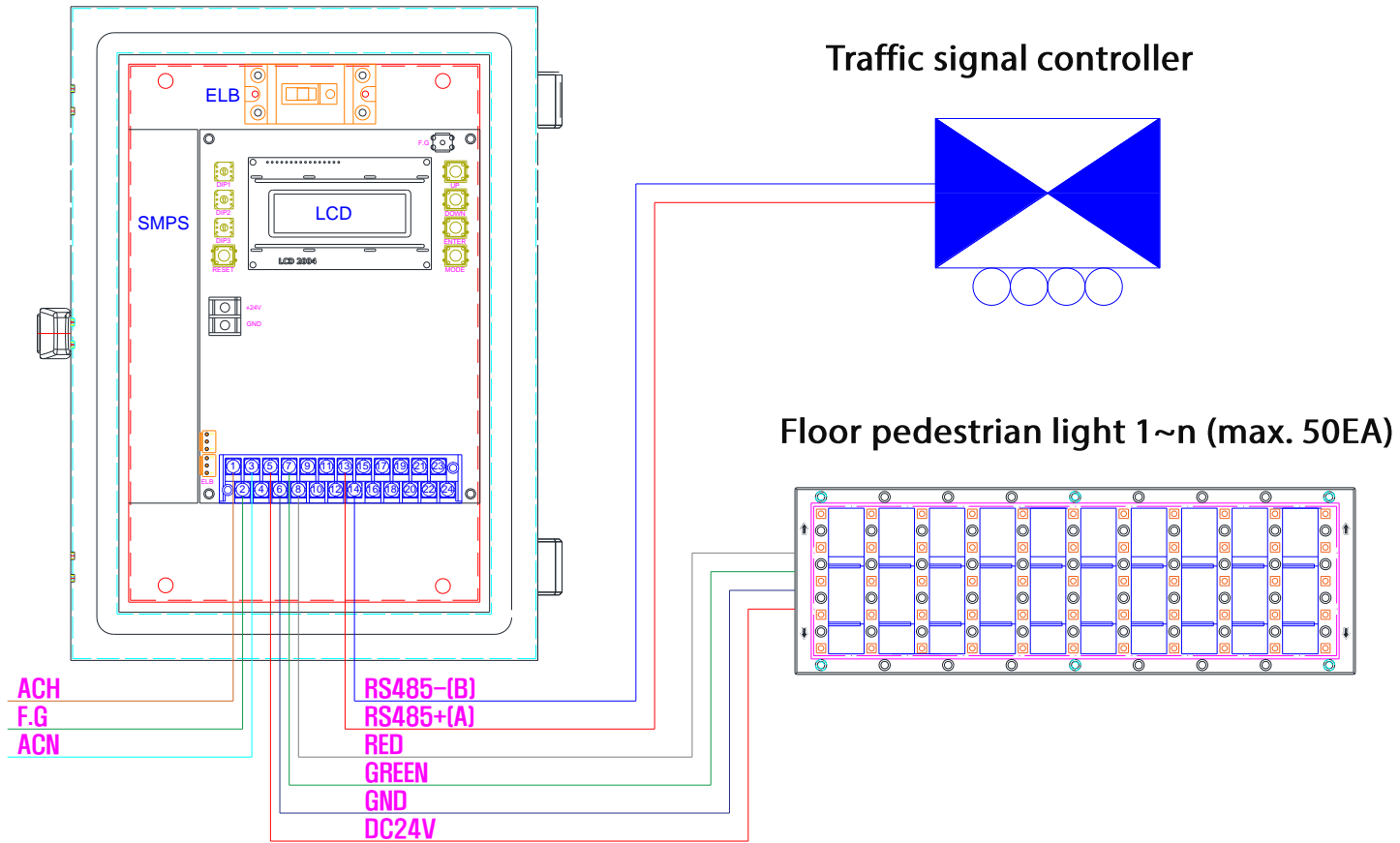


Integrated Pedestrian Lamp – Block diagram 1

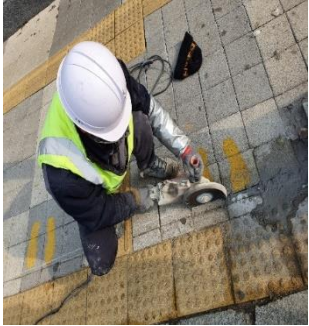


- Option Board : It is inserted into the traffic signal controller and reports signal status, etc. to the control unit. device that transmits
- Controller : pedestrian signal lights from the option board inserted into the traffic signal controller.
Collects the status and monitors display unit equalization control, dimming control, and abnormal operation.
device to control
- Floor pedestrian light :Installed on the floor, the walking signal status is green, flashing, and red. device that expresses

Integrated Pedestrian Lamp – Block diagram 2



Integrated Pedestrian Lamp – Installation process



Block cutting



Block rebalancing



Fixture connect



Buried in the ground



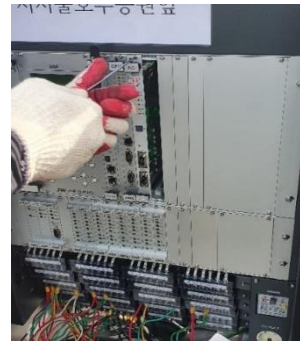
Filling the gaps with silica sand



Power supply line connection



Controller installation

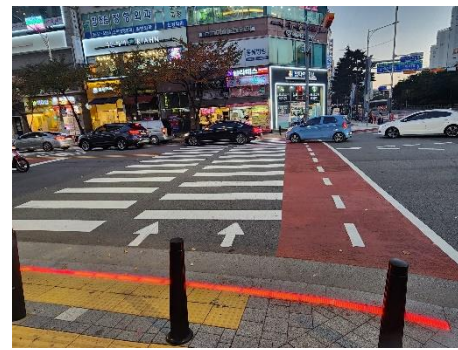


Insert Option Board



Operation test

Integrated Pedestrian Lamp – Installation site



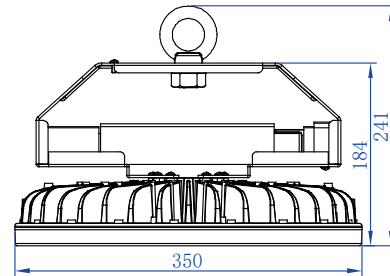
HIGH BAY LIGHT

Life(hrs) : 50,000 ~ 60,000(5 years if using 12hours per day)

Energy Save : 70 ~90%

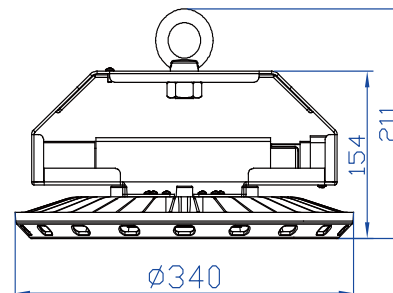
Application : Park, Room, Ceiling, Spot lighting

Color Rendering : >Ra80



Model : CY-HIA-100W

Power Consumption	100W
CRI	> 80
Efficiency (lm/w)	1300
Luminous Flux (lm)	1,300
Dimension W x H x D (mm)	Ø70 x 59
Weight (kg)	3.7



Model : CY-HIB-150W

Power Consumption	150W
CRI	> 80
Efficiency (lm/w)	130
Luminous Flux (lm)	19,500
Dimension W x H x D (mm)	Ø340 x 211
Weight (kg)	3.7

LED STREET LIGHT

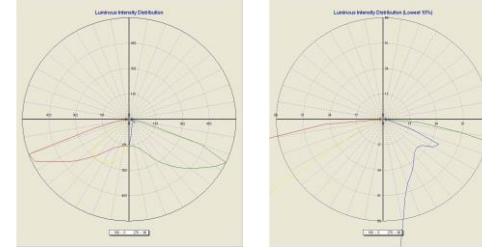
Life(hrs) : 50,000 ~ 60,000(5 years if using 12hours per day)

Energy Save : 70 ~90%

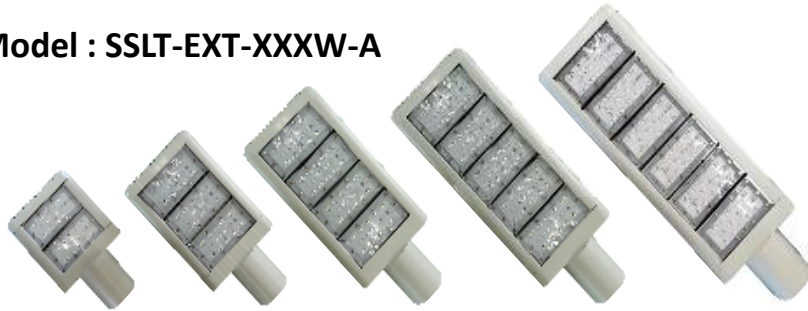
Application : Park, Road, High way, Spot lighting

Color Rendering : >Ra80

■ Luminous intensity Distribution



Model : SSLT-EXT-XXXW-A



50W

75W

100W

125W

150W

Model : SSLT-EXT-XXXW-B



25W – 150W

LED light 3000K and 5700K with difference in light output:

Model	Power (w)	Color Temp (CCT)	CRI (RA)	Lumens (lm)	Efficiency (lm/w)	Weight (kg)	Dimension (WxHxD)	Manage No.
SSLT-EXT-25W-A/B	25	5000	80	3750	150	2.4	180x217x50	-
SSLT-EXT-50W-A/B	50	5000	80	7500	150	3.0	180x287x50	-
SSLT-EXT-75W-A/B	75	5000	80	11250	150	3.5	180x357x50	-
SSLT-EXT-100W-A/B	100	5000	80	15000	150	4.5	180x427x50	23534357
SSLT-EXT-125W-A/B	125	5000	80	18750	150	5.0	180x497x50	23534358
SSLT-EXT-150W-A/B	150	5000	80	22500	150	6.0	180x567x50	23534359

LED TUNNEL LIGHT

Life(hrs) : 50,000 ~ 60,000

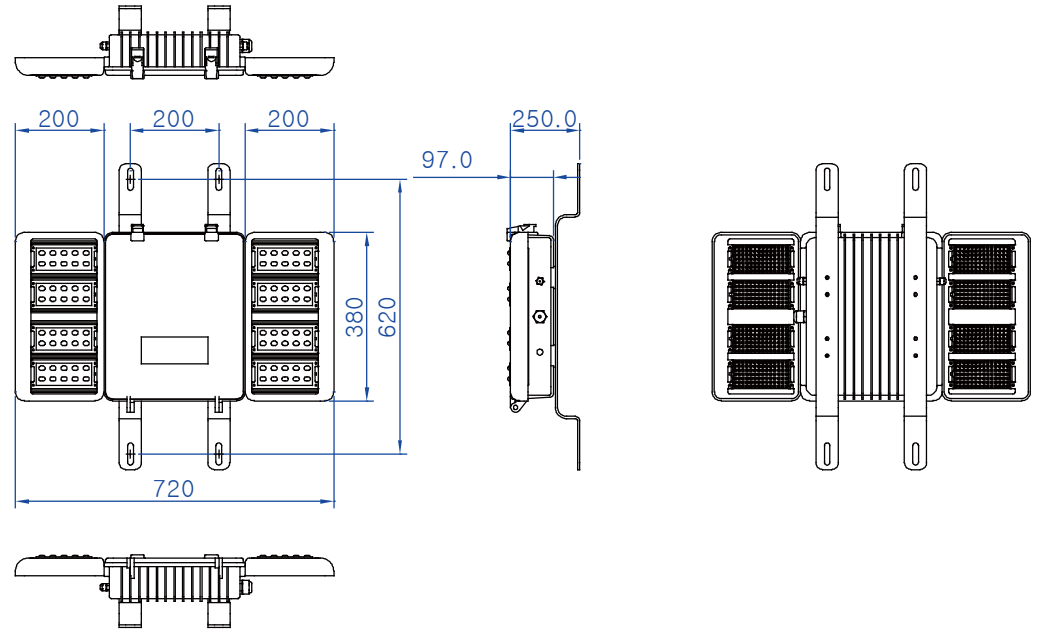
Energy Save : 70 ~ 90%

Application : Tunnel Light

Color Rendering : >Ra80

Power : 25W ~ 75W

Power : 100W ~ 200W



Model	Power [w]	Color Temp [CCT]	CRI [RA]	Lumens [lm]	Efficiency [lm/w]	Weight [kg]	Dimension [WxHxD]	Manage No.
CYTU-5238B-50W	50	5000	80	7500	150		520x380x157	23536669
CYTU-5238B-75W	75	5000	80	11250	150		520x380x157	-
CYTU-5238B-100W	100	5000	80	15000	150		720x380x157	23536670
CYTU-5238B-125W	125	5000	80	18750	150		720x380x157	
CYTU-5238B-150W	150	5000	80	22500	150		720x380x157	
CYTU-5238B-200W	200	5000	80	30000	150		720x380x157	

LED CONE LIGHT

Life(hrs) : 50,000 ~ 60,000(5 years if using 12hours per day)

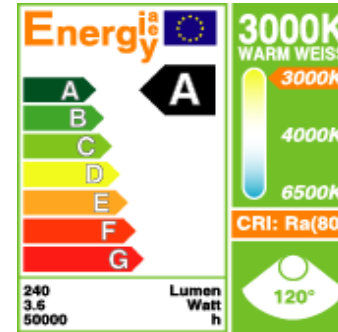
Energy Save : 70 ~90%

Application : Park, Room, Ceiling, Spot lighting

Color Rendering : >Ra80



**LED CONE LIGHT
(E26/E27)**



Model : CCR-D7064-10W

Power Consumption	10W
CRI	> 80
Efficiency (lm/w)	130
Luminous Flux (lm)	1,300
Dimension W x H x D (mm)	Ø70 x 59
Weight (g)	170

Model : CCR-D7064-15W

Power Consumption	15W
CRI	> 80
Efficiency (lm/w)	130
Luminous Flux (lm)	1,950
Dimension W x H x D (mm)	Ø70 x 64
Weight (g)	180



LED MR16 (GU5.3)



Model : CMR16-COB-6W

Power Consumption	6W
CRI	> 80
Efficiency (lm/w)	80
Luminous Flux (lm)	480
Dimension W x H x D (mm)	Ø45 x 38
Weight (g)	68

LED MR16 (GU5.3)



Model : CMR16-SPOT-6W

Power Consumption	6W
CRI	> 80
Efficiency (lm/w)	80
Luminous Flux (lm)	480
Dimension W x H x D (mm)	Ø45 x 38
Weight (g)	368

LED Bulb (E26)



Model : CBB-A19-6W

Power Consumption	6W
CRI	> 80
Efficiency (lm/w)	95
Luminous Flux (lm)	570
Dimension W x H x D (mm)	Ø60 x 120
Weight (g)	120

LED Bulb (E26)



Model : CBB-A19-8W

Power Consumption	8W
CRI	> 80
Efficiency (lm/w)	95
Luminous Flux (lm)	760
Dimension W x H x D (mm)	Ø60 x 120
Weight (g)	128

LED Down Light 6 inch



Model : CDL-6IN-15W

Power Consumption	15W
CRI	> 80
Efficiency (lm/w)	95
Luminous Flux (lm)	1,425
Dimension W x H x D (mm)	Ø150 x 168 x 83
Weight (g)	355

LED Down Light 8 inch



Model : CDL-8IN-30W

Power Consumption	30W
CRI	> 80
Efficiency (lm/w)	95
Luminous Flux (lm)	2,850
Dimension W x H x D (mm)	Ø205 x 225 x 95
Weight (g)	620

LED Flood Light (Square Type)



Model : CSQ-INT-30W

Power Consumption	30W
CRI	> 75
Efficiency (lm/w)	75
Luminous Flux (lm)	2,250
Dimension W x H x D (mm)	242 x 172 x 72
Weight (g)	750

LED Flood Light (Square Type)



Model : CSQ-INT-45W

Power Consumption	45W
CRI	> 75
Efficiency (lm/w)	75
Luminous Flux (lm)	3,375
Dimension W x H x D (mm)	242 x 172 x 72
Weight (g)	750

LED Par 30 (E26)



Model : CPAR30-SPOT-15W

Power Consumption	15W
CRI	> 80
Efficiency (lm/w)	100
Luminous Flux (lm)	1,500
Dimension W x H x D (mm)	∅93 x 97
Weight (g)	207

LED Par 30 (E26)



Model : CPAR30-DIFF-15W

Power Consumption	15W
CRI	> 80
Efficiency (lm/w)	95
Luminous Flux (lm)	1,425
Dimension W x H x D (mm)	∅93 x 97
Weight (g)	207

LED Rail Spot Light (Par30)



Model : CRAIL-DINC-18W

Power Consumption	18W
CRI	> 80
Efficiency (lm/w)	100
Luminous Flux (lm)	1,800
Dimension W x H x D (mm)	∅100 x 229 x 99
Weight (g)	310

LED Rail Spot Light (Par30)



Model : CRAIL-DIN-15W

Power Consumption	15W
CRI	> 80
Efficiency (lm/w)	100
Luminous Flux (lm)	1,500
Dimension W x H x D (mm)	∅100 x 156 x 207
Weight (g)	290

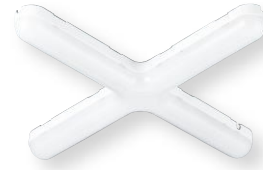
LED Twin Light (Straight Type)



Model : CTWIN-ST01-30W

Power Consumption	30W
CRI	> 75
Efficiency (lm/w)	75
Luminous Flux (lm)	2,250
Dimension W x H x D (mm)	600 x 52.5 x 45
Weight (g)	450

LED Twin Light (Cross Type)



Model : CTWIN-CR01-60W

Power Consumption	60W
CRI	> 75
Efficiency (lm/w)	75
Luminous Flux (lm)	4,500
Dimension W x H x D (mm)	600 x 52.5 x 600
Weight (g)	540

LED Living Room Light (Ceiling Mount)



Model : CLR-380-60W

Power Consumption	60W
CRI	> 80
Efficiency (lm/w)	100
Luminous Flux (lm)	6,000
Dimension W x H x D (mm)	370 x 700 x 70
Weight (g)	700

LED Living Room Light (Ceiling Mount)



Model : Model : CLR-380-120W

Power Consumption	120W
CRI	> 80
Efficiency (lm/w)	100
Luminous Flux (lm)	12,000
Dimension W x H x D (mm)	760 x 700 x 70
Weight (g)	1,200

LED Room Light (Ceiling Mount)



Model : CROOM-CW490-50W

Power Consumption	50W
CRI	> 80
Efficiency (lm/w)	100
Luminous Flux (lm)	5,000
Dimension W x H x D (mm)	Ø490 x 90
Weight (g)	1,200

LED Room Light (Ceiling Mount)



Model : CROOM-SC540-50W

Power Consumption	50W
CRI	> 80
Efficiency (lm/w)	100
Luminous Flux (lm)	5,000
Dimension W x H x D (mm)	540 x 540 x 74
Weight (g)	2,400

LED Tube Light (T8)



Model : CTUBE-T8-18W

Power Consumption	18W
CRI	> 80
Efficiency (lm/w)	130
Luminous Flux (lm)	2,340
Dimension W x H x D (mm)	∅ x 1,158
Weight (g)	380

LED Race Way (Race Way Type)



Model : CRAW-1200-20W

Power Consumption	20W
CRI	> 75
Efficiency (lm/w)	80
Luminous Flux (lm)	1,600
Dimension W x H x D (mm)	1,200 x 48 x 23
Weight (g)	2,400

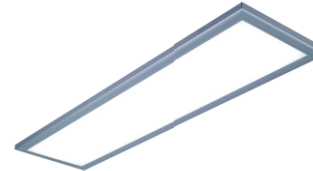
LED Flat Light (600 x 600)



Model : CFL-6060-45W

Power Consumption	45W
CRI	> 80
Efficiency (lm/w)	110
Luminous Flux (lm)	4,950
Dimension W x H x D (mm)	600 x 600 x 45
Weight (g)	2,700

LED Flat Light (1200 x 300)



Model : CFL-1230-45W

Power Consumption	15W
CRI	> 80
Efficiency (lm/w)	110
Luminous Flux (lm)	4,950
Dimension W x H x D (mm)	1,259 x 316 x 45
Weight (g)	2,700

LED High Bay Light (High Bay)



Model : CHBAY-PT390-120W

Power Consumption	120W
CRI	> 80
Efficiency (lm/w)	100
Luminous Flux (lm)	12,000
Dimension W x H x D (mm)	∅390 x 230
Weight (g)	3,600

LED Park Light (Street Light)



Model : CST-SUN-35W

Power Consumption	35W
CRI	> 80
Efficiency (lm/w)	100
Luminous Flux (lm)	3,500
Dimension W x H x D (mm)	377 x 175 x 66
Weight (g)	2,700

Street Light / South Korea / Daegu Mangwoo Park



Date : DEC,2007

Specification. : AC220V / 180W

Client : Daegu metropolitan city

Street Light / Australia / Margaret River



Date : Aug,2008

Specification. : AC220V / 180W

Client : Australia

Street Light / South Korea / Korea Gas Corporation



Date : DEC,2008
Specification. : AC220V / 180W
Client : Korea Gas Corporation

LED Street Light / South Korea / Donggu



Date : JUN,2009
Specification. : AC220V / 120W
Client : Incheon, Dong Gu, Songlimdong

Street Light / China / Chung Do



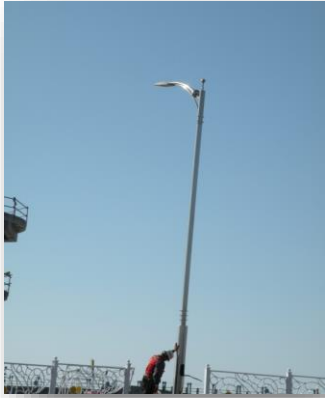
Date : DEC,2008
Specification. : AC220V / 180W
Client : Chung Do, China

LED Street Light / South Korea / Ha Nam City



Date : JUL,2009
Specification. : AC220V / 120W
Client : Ha Nam, Jung Bu,

Street Light / South Korea / Saemangum



Date : DEC,2009

Specification. : AC220V / 120W

Client : Gunsam City

Solar Street Light / South Korea / Incheon Landfill Road



Date : DEC,2009

Specification. : DC12V / 60W (Solar and Windmil)

Client : Incheon Metropolitan city

Street Light / South Korea / LG Philips LCD Cluster



Date : JUN,2009

Specification. : AC220V / 60W

Client : LG Philips

Street Light and Down light / India / New Delhi



Date : JUN,2010

Specification. : AC220V / 120W and 15W

Client : NDPL(New Delhi Municipal Council)

Street Light / Indonesia / Goa Gajah City



Date : DEC,2011

Specification. : AC220V / 90W

Client : Goa Gajah City

Street Light / Korea / Searon Automotive



Date : DEC,2014

Specification. : AC220V / 35W

Client : Searon Automotive

Down Light / South Korea / Bupyong



Date : DEC,2013
Specification. : AC220V / 15W
Client : Bupyong City

LED HQI / South Korea / Bupyong



Date : DEC,2013
Specification. : AC220V / 40W
Client : Bupyong City

LED Tube / South Korea / Searon Automotive



Date : FEB,2014
Specification. : AC220V / 20W
Client : Searon Automotive

LED Hi-Bay / South Korea / Searon Automotive



Date : FEB,2014
Specification. : AC220V / 120W
Client : Searon Automotive

LED Tube / South Korea / Mando



Date : FEB,2014
Specification. : AC220V / 20W
Client : Mando

LED Tube / South Korea / Mando



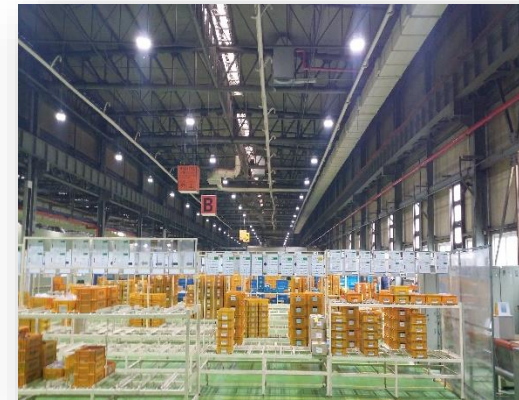
Date : FEB,2014
Specification. : AC220V / 20W
Client : Mando

Flat Light / South Korea / Soosan



Date : MAR,2014
Specification. : AC220V / 50W
Client : Soosan

LED Hi-Bay / South Korea / Mando



Date : FEB,2014
Specification. : AC220V / 120W
Client : Mando

LED Hi-Bay / South Korea / Metaldyne



Date : FEB,2014
Specification. : AC220V / 120W
Client : Metaldyne

LED Hi-Bay / South Korea / Metaldyne



Date : FEB,2014
Specification. : AC220V / 120W
Client : Metaldyne

LED Hi-Bay / South Korea / SBC-enertech



Date : FEB,2014
Specification. : AC220V / 120W
Client : SBC-enertech

LED Hi-Bay / South Korea / Metaldyne



Date : FEB,2014
Specification. : AC220V / 120W
Client : Metaldyne

Light Installation

Down Light and HQI / South Korea / Incheon



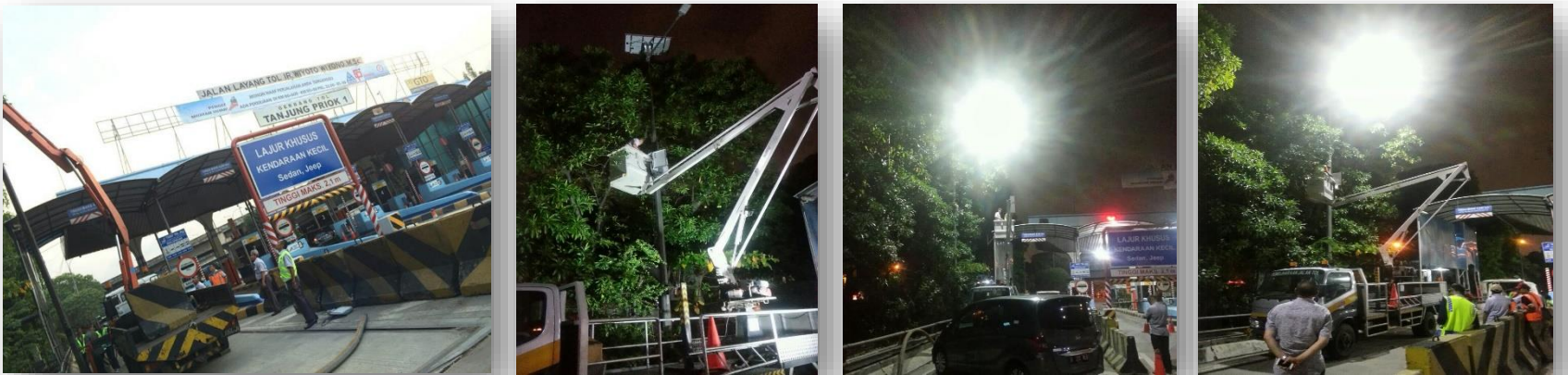
Date : OCT,2015
 Specification. : AC220V / 35W
 Client : Doing Incheon Subway

LED Street Light 120W / USA / California



Date : OCT,2015
 Specification. : AC100V / 120W
 Client : California Campground

LED Solar Street Light / Indonesia / High way



Date : FEB, 2015
 Specification. : DC48V / 80W
 Client : High way

Solar LED Street Light – Standalone type



Date : OCT,2016
Specification. : DCV 24V 35W
Client : Vietnam

Solar LED Street Light – Standalone type



Date : OCT,2016
Specification. : DC 24V 35W
Client : Vietnam

Hybrid Solar System



Date : FEB, 2017
Specification. : AC220V 60Hz / 3KW
Client : Vietnam



LED Flood lighting



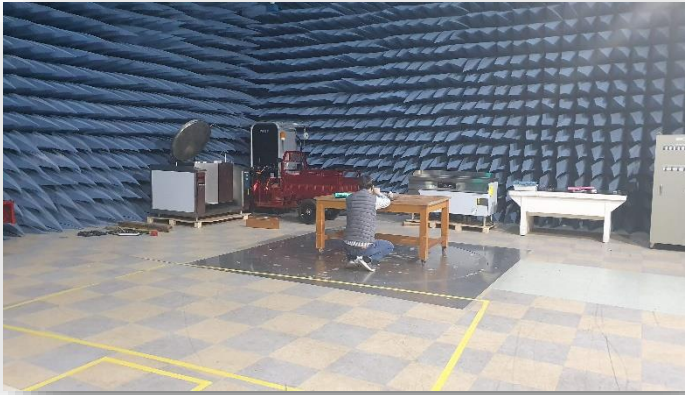
Date : DEC,2018
Specification. : AC220V
Client : Incheon

LED Flood lighting



Date : JAN, 2019
Specification. : AC220V
Client : Incheon

Pedestrian crossing work EMI test in KTR



Date : APR,2020

Specification. : AC220V / 35W

Client : A1 Traffic light R&D

Pedestrian crossing work monitoring system Sung dong-gu Office



Date : OCT, 2020

Specification. : AC220V / 100W

Client : In front of Sung dong-gu Office

Pedestrian crossing work installed



Date : DEC,2020

Specification. : AC220V / 240W

Client : Seoul Jung-gu (Myung dong)

Water mist system



Date : APR, 2021

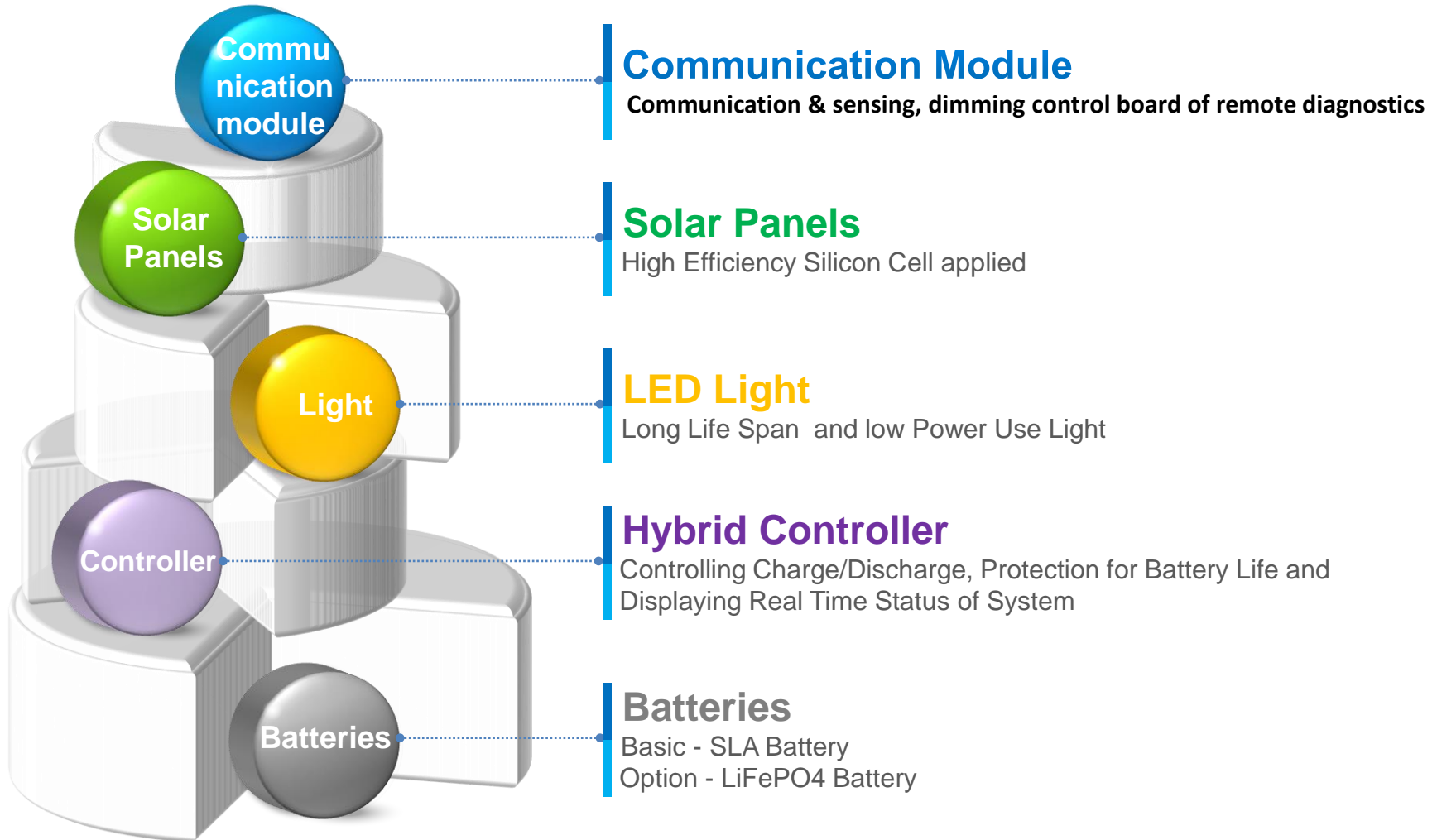
Specification. : AC220V / 100W

Client : Yuakdong 9

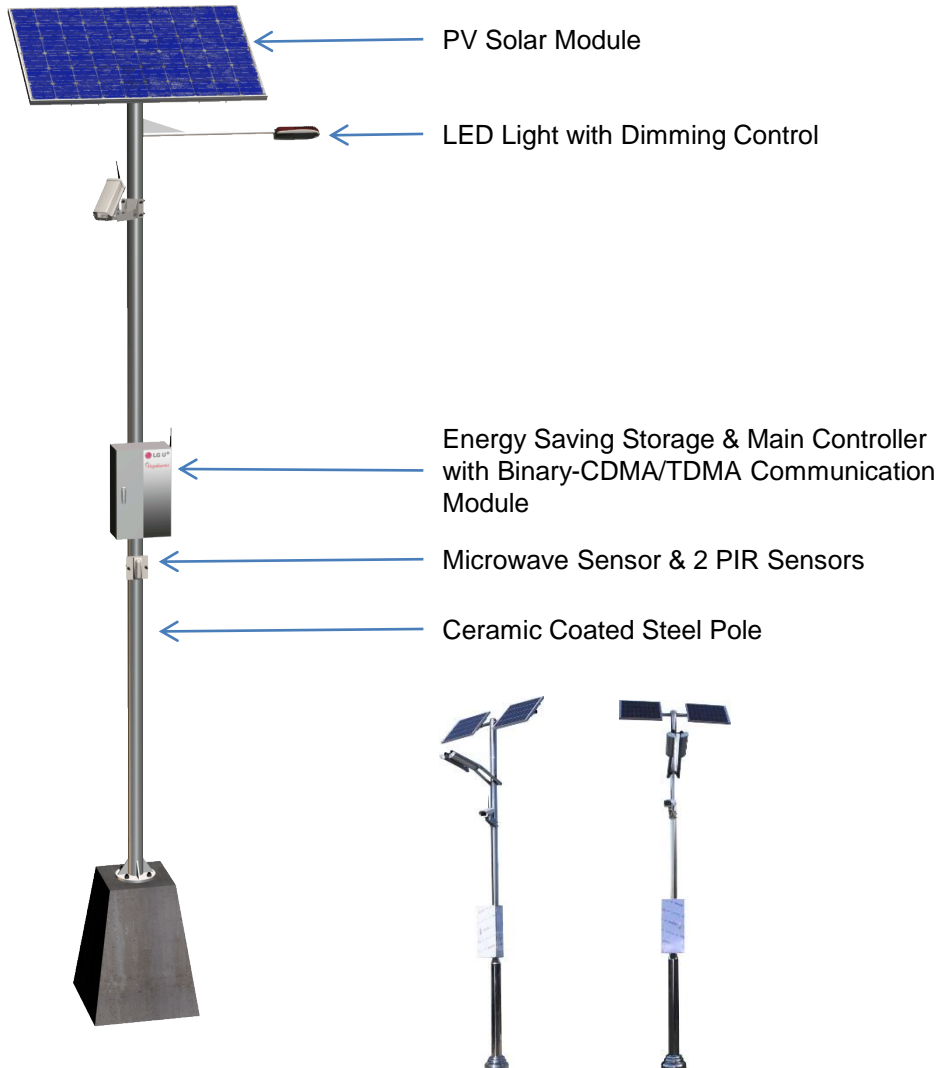


Solar Street Light for ECO Plane

The solar LED Street Light System from CYAN HOLDINGS Co., Ltd is composed of mainly 5 Parts.



Features



Plant & Play

Solar power management system enables the system to work right after installation without any power supply and cable laying.

Presence Based Adaptive Lighting

Lights dim to pre-defined levels during off-peak hours. Surrounding lights increase to full brightness as soon as human presence (pedestrian, bicycle or car) is detected.

Management Controller & Software

Individual lights can be remotely monitored and managed to meet local requirements using web-based software.

Safety & Security

Interlocked with lighting system, 4G LTE CCTV Camera secures safety of pedestrians, bicycles and cars and prevents possible vandalism.

Weather Control

Lighting levels adjust to weather conditions such as heavy rain and snow. (optional)

Ceramic Coated Steel Pole

Rust and corrosion free, 9H surface hardness ceramic enameled steel pole

Fail Proof

Lights go to full brightness in the event of system failure.

Light Pollution Reduction

Adaptive controls reduce light pollution and create a healthier living environment for both humans and wildlife.

1. PV Module



- ❶ High Efficiency Crystal Silicon Wafer Use
- ❷ Super Smooth Nano Self Cleaning Coating to be kept High Efficiency
- ❸ Coated Aluminum Frame to avoid Corrosion

Pmax	40W	100W	125W	327W
Vmax	18.673V	18.2V	18V	54.7V
I _{max}	4.656A	5.43A	6.87A	5.98A
Voc	18.67V	23.0V	22.2V	64.9V
I _{sc}	5.019A	5.89A	7.35A	6.46A
Dimension	836.8*654*35m/m	1290 * 670 * 30m/m	1165 * 535 * 35m/m	1559* 1046 * 46m/m

The Solar Panel Power (Maximum Power) could be changed to be adjusted to LED Light.

2. LED Street Light

- ① High Efficiency Crystal Silicon Wafer Use
- ② Unique Radiating Technology

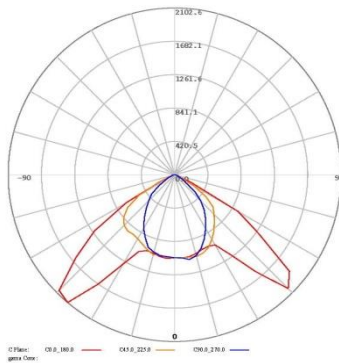


Luminous Flux	<i>lm</i>	5,400
Wattage	<i>W</i>	34.4
Power Factor	%	>0.95
Current (for AC220V)	<i>A</i>	1.4
Luminous Efficiency	<i>lm/W</i>	157
Color Temperature	<i>K</i>	5,000
Color Rendering Index	<i>Ra</i>	80.5
Peak Wavelength	<i>nm</i>	450
Dimensions	<i>Width (mm)</i>	175
	<i>Length (mm)</i>	370
Voltage	<i>DC</i>	24V
Beam angle	<i>Degree</i>	100
Life Time	<i>Year</i>	5
Weight	<i>Kg</i>	3.7
Street Light Turn On	(Sunset) <i>Lux</i>	
Street Light Turn Off	(Sunrise) <i>Lux</i>	

3. Light Intensity Distribution Curve

- ❶ Long Life Span LED Light
- ❷ Unique Radiating Technology

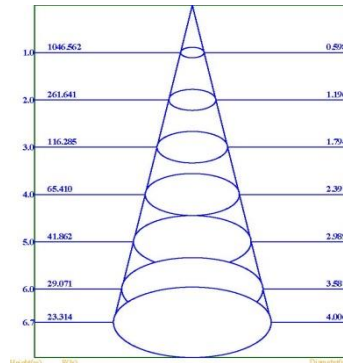
Light Intensity Distribution Curve



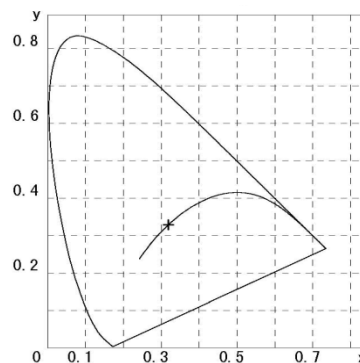
Instrument Status

Scan Range : 380nm-780nm Interval : 5nm

Illuminance Distance Curve



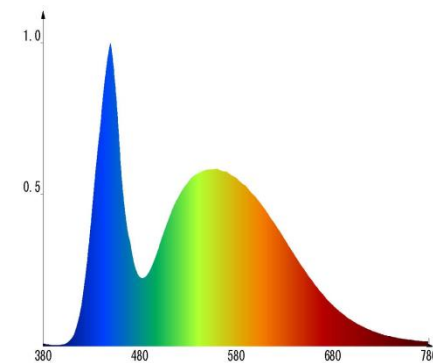
CIE1931 Diagram



Chromaticity Coordinate

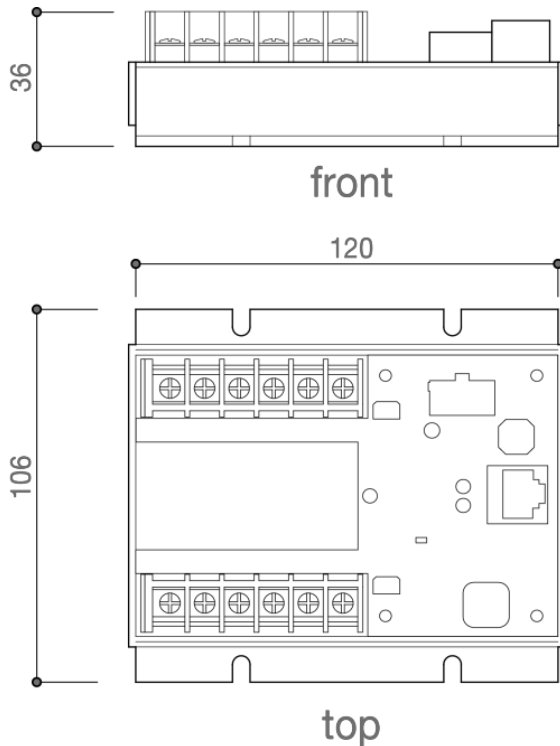
$x=0.3193$ $u=0.2024$

Relative

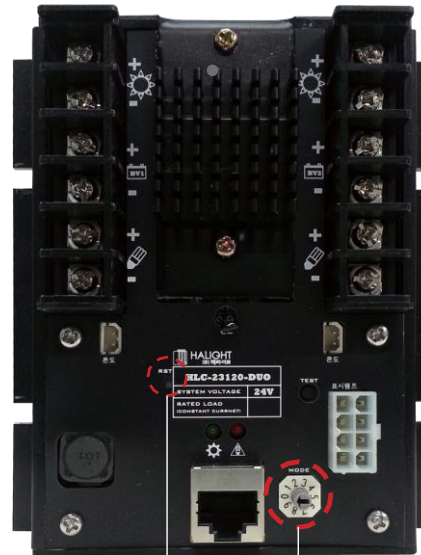


$y=0.3290$ $v=0.3129$

4. Controller



① Lighting control switches

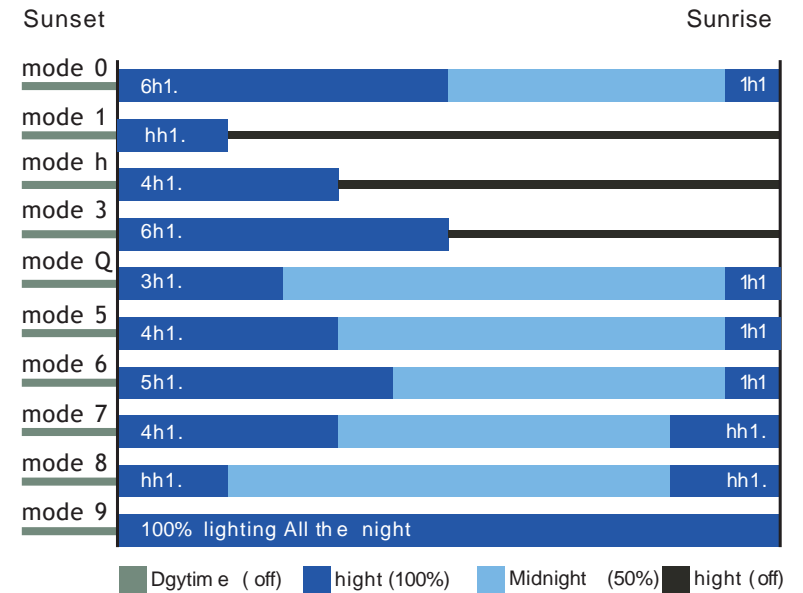


Reset Button

Lighting mode switch

② Lighting mode switch

- * "0" mode set by Factory
- * After mode changing, need to press the reset button
- * Midnight hours will be changed automatically by detected sunrise time



※ Mode no. would be changed by manufacture after notification

5. Battery

- ❶ Basic : SLA Battery (Option : LiFePO4 Battery)
- ❷ Calculating of Optimal Battery Volume according to Sunless Days and Working Time a Day of LED Light.



Item	Specification			
Nominal V	DC 12V			
Volume	35Ah	80Ah	100Ah	120Ah
Dimension	197*137*203m/m	310 * 172 * 231m/m	310 * 172 * 231m/m	410 * 177 * 225m/m

Batteries Volume could be changed for more Working Time a Day of LED Light and more Sunless Days.

Thank You



www.cyanholdings.co.kr

TEL : +82-32-555-7047

Mobile : +82-10-8383-5833

E-mail : ornics0@gmail.com

Address : 14, Anaji-ro 97beon-gil, Gyeyang-gu, Incheon, Republic of Korea.
Copyright © 2015 by Cyan Holdings Co., Ltd. ALL RIGHTS RESERVED.