

ADDRESS #44-54 Ungji-ro Chukhyeon-ri Tanhyeon-myeon Paju-si Gyeonggi-do Korea  
MOBILE 82.10.9056.3961 TEL 82.31.943.7160 FAX 82.31.943.7138

**PURISYS**

**PURISYS**



INLINE WATER FILTER  
QUICK CHANGE WATER FILTER  
GRAVITY WATER FILTRATION SYSTEM



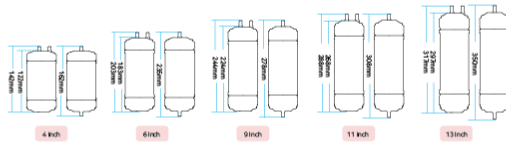
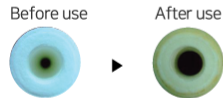
PREMIUM INLINE WATER FILTER  
INNOVATIVE MULTI FUNCTIONAL FILTER MEDIA  
DIVERSITY OF FILTER MEDIA  
DIVERSITY OF DIMENSION OF INLINE CARTRIDGE

 [www.purisys.co.kr](http://www.purisys.co.kr)

## SEDIMENT FILTER



Sediment is used to eliminate sediment such as dust, rust, sand and other solid particles that can damage equipment in next step. Our double layer depth filtration construction is effective for reducing contaminants ranging in size upto 1 micron which is adequate to reduce cysts such as giardia and cryptosporidium.



## GRANULAR ACTIVATED CARBON

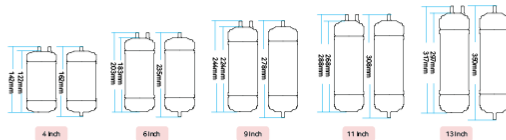


This filter is for elimination or reduction of inorganic contaminants and impurities that can cause undesirable taste, odor and color in potable water. We use top quality(NSF certified) coconut shell activated carbon.



LOT NUMBER	QUANTITY (kg)	PACKING (kg/BAG)	MOISTURE (%)	ASH (%)	pH	A.D. (g/g)	HARDNESS	IODINE (mg/g)			
								+30 mesh (%)	30-60 mesh (%)	-60 mesh (%)	
S605/202	5,000	25	2.7	0.44	7-9	-	MIN 95	MIN 1200	MAX 5	MIN 90	MAX 5

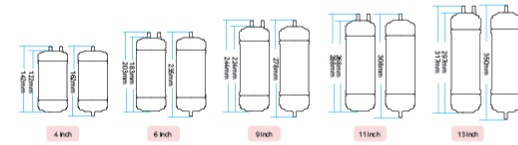
Patented diaphragm u type housing  
To minimize channeling  
To extend contact time



## SEDIMENT/CARBON COMPOSITE FILTER



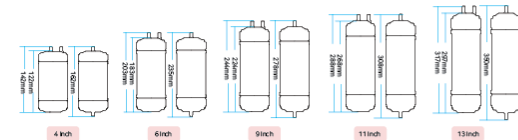
This hybrid carbon filter is made of melt-blown PP and activated carbon for multi-functional use. This filter can be acting as sediment and pre/post carbon at the same time.



## CARBON BLOCK FILTER



Carbon block filter consists of finely powdered activated carbon that have been bonded together to form a totally uniform, solid profile with superior adsorptive capacity and kinetic efficiency. Produced from NSF certified materials and suitable for residential point-of-use water filtration, commercial and food service application.



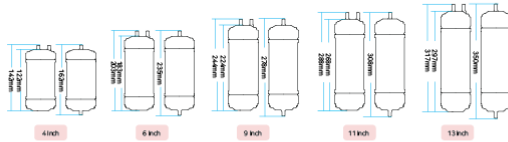
## NANO SILVER MEMBRANE FILTER



This membrane is made of pure PP free of glue or binder that can cause unpleasant smell in the water. It has 99% particle removal rate. Its pleated structure made surface area much bigger for higher efficiency and it has strong pressure withstand.



PARTICLE TEST RESULT (AMOUNT OF WATER : 2LPM, MEASURE AFTER ONE MINUTE)						
PARTICLE SIZE	0.5-1µm(#/ml)		1-5µm(#/ml)		5-15µm(#/ml)	
DISPENSER NUMBER	25,425		60,779		24,819	
PARTICLE SIZE	0.5-1µm(#/ml)	REMOVAL RATE (%)	REMOVAL RATE (%)	REMOVAL RATE (%)	REMOVAL RATE (%)	REMOVAL RATE (%)
P	61	99.8%	121	99.8%	49	99.8%



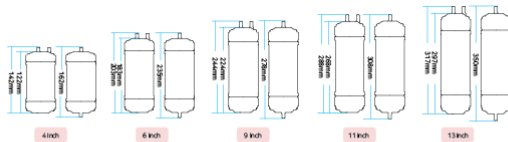
## UF MEMBRANE FILTER



Ultrafiltration (UF) is a separation process using membranes with pore sizes in the range of 0.1 to 0.001 micron. Typically, UF membranes will remove high molecular-weight substances, colloidal materials, and organic and inorganic polymeric molecules allowing only fresh water and dissolved minerals to pass through.



This is widely used water treatment membrane in industry and commercial and now available for domestic use with lots of benefits comparing with reverse osmosis membrane(RO) such as saving minerals after filtration, no storage tank is required and no waste water would be produced.



## RO MEMBRANE FILTER



Reverse osmosis filter for residential water treatment utilize advanced thin-film nanocomposite membrane technology to safely and effectively treat water for home use. The flat sheet membrane is manufactured by 'LG Chem, Ltd.' and it has been tested & certified by NSF international against 'NSF/ANSI Standard 58'. All sizes of residential RO membranes are available in standard configurations and can easily fit into any point-of-use residential RO systems.

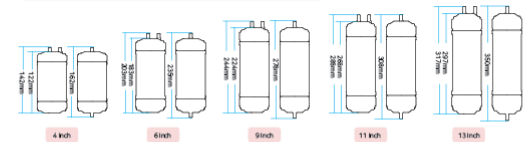
PRODUCT NUMBER	MINIMUM PERMEATE FLOW RATE (GPD)	MINIMUM NaCl REJECTION(%)	STABILIZED NaCl REJECTION(%)	APPLIED PRESSURE (PSIG/BAR)
TW-1812-50	50	96	98	60 (4.1)
TW-1812-80	80	96	98	60 (4.1)
TW-1812-100	100	96	98	60 (4.1)
TW-1812-150	150	96	98	60 (4.1)



## HYDROGEN RICH WATER FILTER



Optimized composition of magnesium and several mineral substances makes dissolved hydrogen upto 1.2~1.4ppm. (therapeutic level : 0.5~1.6ppm) Hydrogen rich water not only increases your immunity through oxidation reduction, Also modest adjustment of PH arises to make water alkaline.



## QUICK CHANGE WATER FILTER



Our quick change (push & turn) system is offered with all kinds of filter media that we offer with inline cartridge system. Such as sediment, GAC, carbon block etc.



## GRAVITY FILTRATION SYSTEM



### 1st stage : Ceramic Dome Filter

Traps contaminants, bacteria, spores, cysts and parasites, reduces organic chemicals and herbicides.

### 2nd stage : Multi layer hexagonal cartridge

- Granular activated carbon
- removes bad taste, odor and chlorine
- Ion exchange resin : Softens and purifies water by removing toxins and heavy metals
- Far infrared bio balls
- Helps to boost strength and vitality.

Improves memory functions Known to help regulate blood pressure, blood sugar level and hormonal functions.

- Silica sand
- Aids in digestion and boosts metabolism. Improves circulation and immune system.

- Mineral stone
- Infuses water with micro nutrient such as calcium, iron, zinc and magnesium
- Anti-oxidant ball
- Strengthen immunity through oxidation reduction. Modest adjustment of PH arises to make water alkaline.

### 3th stage : Magnetizer

- To break down water molecule helps water to be adsorbed easily into cell and makes water vitalizing.

